

Classification:

AT10-008a

Reference:

ITB10-075a

COPYRIGHT© NISSAN NORTH AMERICA, INC.

Date:

April 14, 2011

2009-2011 G37 AND 2011 G25; TRANSMISSION SHIFT ISSUES AND/OR A/T DTC STORED

This bulletin has been amended. The APPLIED VEHICLES, IF YOU CONFIRM, and CLAIMS INFORMATION sections have been revised. Please discard all previous versions of this bulletin.

APPLIED VEHICLES: 2009-2011 G37 Sedan, Coupe, and Convertible (V36, CV36, and HV36)
2011 G25 Sedan (V36)

APPLIED 2009-2010 G37 Sedan, Coupe, and Convertible: All

VINS & DATES:

2011 G37 Sedan:

2WD vehicles built between -

JN1CV(*)AP(*)BM 300001 and JN1CV(*)AP(*)BM 300823

OR

JN1CV(*)AP(*)BM 500002 and JN1CV(*)AP(*)BM 502429

AWD vehicles built between -

JN1CV(*)AR(*)BM 350001 and JN1CV(*)AR(*)BM 351076

OR

JN1CV(*)AR(*)BM 400001 and JN1CV(*)AR(*)BM 403082

2011 G37 Coupe:

2WD vehicles built before JN1CV(*)EK(*)BM 210761 // October 22, 2010

AWD vehicles built before JN1CV(*)EL(*)BM 260627 // October 22, 2010

2011 G37 Convertible:

Vehicles built before JN1CV(*)FE(*)BM 950397 // November 2, 2010

2011 G25 Sedan:

2WD vehicles built before JN1DV(*)AP(*)BM 602533 // October 29, 2010

AWD vehicles built before JN1DV(*)AR(*)BM 652653 // October 29, 2010

NOTE: 2011 G37 Coupe IPL (Infiniti Performance Line) is not included in this TSB.

IF YOU CONFIRM

On an Applied Vehicle:

- Any of these incorrect gear ratio DTCs stored: P0732, P0733, P0734, P0735, P0729, and/or P1734, **and/or**
- A slight vehicle vibration/shutter with light acceleration at low speeds, **and/or**
- At times, the engine rpm goes up (about 200 to 250 rpm) during the 3rd > 4th up shift, or the 4th > 5th up shift, **and/or**
- Engine braking feel is more than expected with deceleration, **and/or**
- The 2nd > 1st down shift is harsher than expected.

IMPORTANT: The purpose of ACTIONS on page 2 is to give you a quick idea of the work you will be performing. You MUST closely follow the entire SERVICE PROCEDURE as it contains information that is essential to successfully completing this repair.

Infiniti Bulletins are intended for use by qualified technicians, not 'do-it-yourselfers'. Qualified technicians are properly trained individuals who have the equipment, tools, safety instruction, and know-how to do a job properly and safely. NOTE: If you believe that a described condition may apply to a particular vehicle, DO NOT assume that it does. See your Infiniti dealer to determine if this applies to your vehicle.

ACTIONS

1. Perform TCM reprogramming (page 3).
 - Refer to step 3 under **TCM reprogramming** in the SERVICE PROCEDURE to confirm this bulletin applies to the vehicle you are working on.
2. For G37, perform ECM reprogramming – page 7 (ECM reprogramming is not needed for G25).
 - Refer to step 3 under **ECM reprogramming** in the SERVICE PROCEDURE to confirm ECM reprogramming applies and is needed for the vehicle you are working on.

NOTE: The ECM reprogramming used for this bulletin is also used for another issue and may have already been performed on your vehicle.

CLAIMS INFORMATION

Submit a Primary Failed Part (PP) type line claim using the following claims coding:

For G37 (TCM and ECM reprogramming)

DESCRIPTION	PFP	OP CODE	SYM	DIA	FRT
Reprogram TCM and ECM	(1)	DX32AA	ZE	32	0.8 hrs

(1) Refer to the electronic parts catalog (FAST or equivalent) and use the appropriate Transmission Control Valve assembly part number as the Primary Failed Part (PFP).

OR

For G25 or G37 (TCM reprogramming only)

DESCRIPTION	PFP	OP CODE	SYM	DIA	FRT
Reprogram TCM	(1)	JE99AA	ZE	32	(2)

(1) Refer to the electronic parts catalog (FAST or equivalent) and use the appropriate Transmission Control Valve assembly part number as the Primary Failed Part (PFP).

(2) Reference the current Infiniti Warranty Flat Rate Manual and use the indicated FRT.

SERVICE PROCEDURE

TCM Reprogramming

1. Connect C-III to the vehicle to begin the reprogramming procedure.
 - If you are not familiar with the TCM reprogramming procedure, click [here](#). This will link you to the "CONSULT- III (C-III) TCM Reprogramming" general procedure.
 - Make sure to erase DTCs from all systems.
 - TCM initialization is not needed for 7 speed A/T reprogramming.

REPROGRAMMING CAUTION:

- Connect a battery charger to the vehicle battery.
If the 12V battery voltage drops during reprogramming, the TCM / ECM may be damaged.
- Be sure to turn OFF all vehicle electrical loads.
If a vehicle electrical load remains ON, the TCM / ECM may be damaged.
- For TCM / ECM reprogramming, the C-III MUST be connected to the VI using the USB cable.
- Be sure to connect the AC Adapter.
If the C-III battery voltage drops during reprogramming, the process will be interrupted and the TCM / ECM may be damaged.
- Turn off all external Bluetooth® devices (e.g., cell phones, printers, etc.) within range of the C-III computer and the VI. If Bluetooth® signal waves are within range of the C-III during reprogramming, reprogramming may be interrupted and the TCM / ECM may be damaged.

2. Navigate C-III to the reprogramming screen shown in Figure 1 example on page 4.

NOTE:

- Do not use the "Reprogramming / Programming" selection.
- Select the Model and Model Year, and then navigate to **Direct Diagnosis > Reprogramming**.
- TCM initialization is not needed for 7 Speed A/T reprogramming.

3. On your C-III screen, look for a **Transmission Part Number** in the **Part Number** column (see Figure 1 example).

- If there is **no Transmission Part Number** listed, this bulletin does not apply.
- If a Transmission Part Number is listed, write it on the Repair Order and then go to step 4.

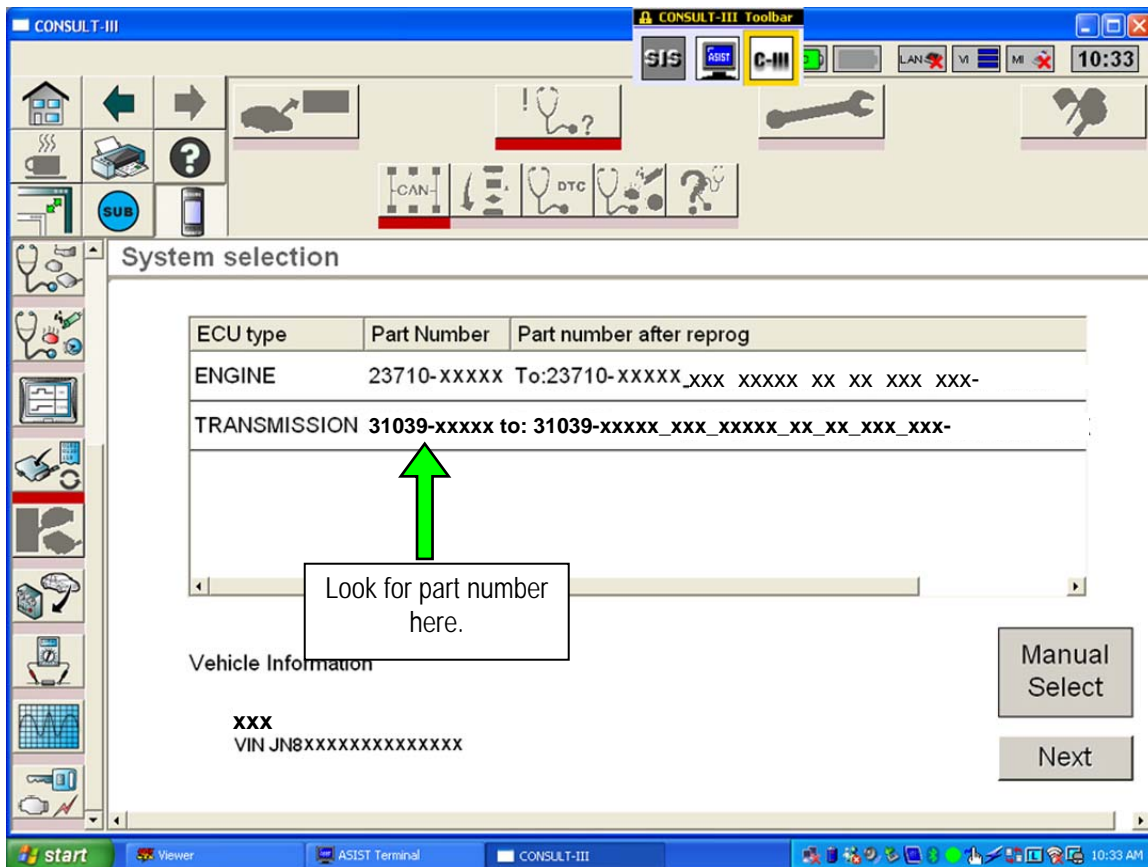


Figure 1

4. Compare the P/N you wrote down to the numbers in the **Current TCM P/N** column in **Table A** below.
- If there is a match this bulletin applies. Continue with the reprogramming procedure.
 - If there is not a match, this bulletin does not apply. Close C-III and refer to ASIST for further diagnostic information.

Table A

Model	Vehicle Configuration	Current TCM P/N 31039 -
2009, 2010, 2011 G37 Sedan	2WD	X211E, X184D, 3RX3D, 3RX0C, 1XJ4A
	4WD	X211B, X184E, 3RX0D, 3RX4A, 1XJ4B
2009, 2010 G37 Coupe	2WD	X211C, X183B, 3RX1A, 3RX6D, 1XJ4E, X351B
	4WD	X211D, X183C, 3RX1B, 3RX6E, 1XJ5A, X351C
2011 G37 Coupe	2WD	X351B
	4WD	X351C
2011 G37 Coupe IPL		Not included in this Bulletin
2009, 2010 G37 Convertible	2WD	X212A, X185C, 3RX9C, 1XJ2D, X352C
2011 G37 Convertible	2WD	X352C
2011 G25 Sedan	2WD	X182C
	4WD	X182D

5. If this bulletin applies and you have performed TCM reprogramming; when reprogramming is complete, the screen in Figure 2 displays.

Print this screen and attach it to the Repair Order for warranty documentation.



Figure 2

6. Erase DTCs in all systems.
 - During TCM reprogramming, DTCs will set in several systems and must be erased before ECM reprogramming.
7. Go to ECM Reprogramming on the next page.

ECM Reprogramming

- Make sure to erase DTCs from all systems.
- If you are not familiar with the reprogramming procedure, click [here](#). This will link you to the "CONSULT- III (C-III) ECM Reprogramming" general procedure.

1. Restart the C-III session by selecting the Home icon in the upper left corner of the screen.

2. Navigate C-III to the ECM Reprogramming screen shown in Figure 1A.

- Use the "Reprogramming / Programming" selection.
- **Do not use** Direct Diagnosis > Reprogramming.

3. On your C-III screen, look at the **Part Number** column (see Figure 1A example):

- If this column is **blank** (no part number listed), this reprogramming **does not apply**.

NOTE: The ECM reprogramming used for this bulletin is also used for another issue and may have already been performed on your vehicle.

- If a Part Number is listed, write it on the Repair Order.

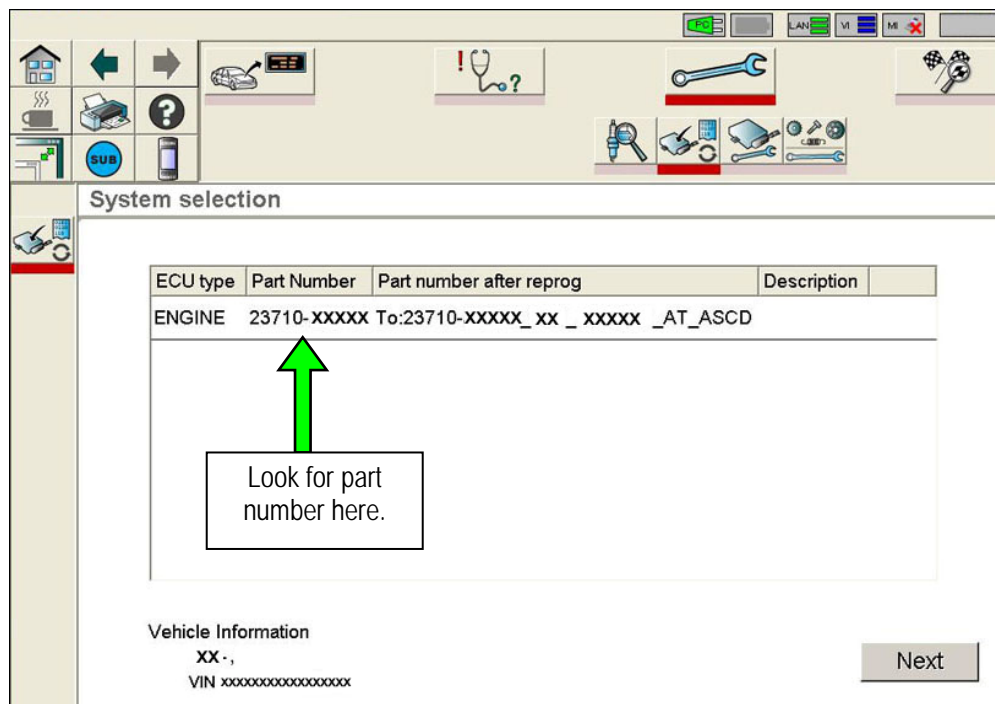


Figure 1A

4. Compare the Part Number you wrote down to the numbers in the **Current ECM P/N** column in **Table A-1**.

- If there is a match, this reprogramming applies. Continue with the reprogramming procedure.

NOTE: If there are two Engine lines (two ECM reprogramming options) on your C-III screen, use the one that **does not** have the message "Caution! Use ONLY with ITBXX-XXX".

- If there is not a match, this reprogramming does not apply.

Table A-1

Model	Vehicle Configuration	Current ECM P/N 23710 -
2009 G37 Sedan	2WD ASCD	1NC4A, 1NC4B, 1NC4C, 1NC4D
	2WD ASCD FPUMP	1NC6A, 1NC6B, 1NC6C, 1NC6D
	2WD ICC	1NC5A, 1NC5B, 1NC5C, 1NC5D
	2WD ICC FPUMP	1NC7A, 1NC7B, 1NC7C, 1NC7D
	4WD ASCD	JU60A, JU60B, JU60C, JU60D
	4WD ICC	JU61A, JU61B, JU61C, JU61D
2009 G37 Coupe	2WD ASCD	1ND4A, 1ND4B, 1ND4C, 1ND4D
	2WD ASCD FPUMP	1ND6A, 1ND6B, 1ND6C, 1ND6D
	2WD ICC	1ND5A, 1ND5B, 1ND5C, 1ND5D
	2WD ICC FPUMP	1ND7A, 1ND7B, 1ND7C, 1ND7D
	4WD ASCD	JU70A, JU70B, JU70C, JU70D
	4WD ICC	JU71A, JU71B, JU71C, JU71D
2009 G37 Convertible	2WD ASCD	JJ50A, JJ50B, JJ50C
	2WD ASCD FPUMP	JJ54A, JJ54B, JJ54C
	2WD ICC	JJ51A, JJ51B, JJ51C
	2WD ICC FPUMP	JJ55A, JJ55B, JJ55C
2010 G37 Sedan	2WD ASCD	1NS0A, 1NS0B, 1NS0C, 1NS0D, 1NS0E
	2WD ASCD FPUMP	1NS2A, 1NS2B, 1NS2C, 1NS2D, 1NS2E
	2WD ICC	1NS1A, 1NS1B, 1NS1C, 1NS1D, 1NS1E
	2WD ICC FPUMP	1NS3A, 1NS3B, 1NS3C, 1NS3D, 1NS3E
	4WD ASCD	1NS6A, 1NS6B, 1NS6C, 1NS6D, 1NS6E
	4WD ICC	1NS7A, 1NS7B, 1NS7C, 1NS7D, 1NS7E
2010 G37 Coupe	2WD ASCD	1NG0A, 1NG0B, 1NG0C, 1NG0D, 1NG0E
	2WD ASCD FPUMP	1NG2A, 1NG2B, 1NG2C, 1NG2D, 1NG2E
	2WD ICC	1NG1A, 1NG1B, 1NG1C, 1NG1D, 1NG1E
	2WD ICC FPUMP	1NG3A, 1NG3B, 1NG3C, 1NG3D, 1NG3E
	4WD ASCD	1NG7A, 1NG7B, 1NG7C, 1NG7D, 1NG7E
	4WD ICC	1NG8A, 1NG8B, 1NG8C, 1NG8D, 1NG8E
2010 G37 Convertible	2WD ASCD	1NJ0A, 1NJ0B, 1NJ0C, 1NJ0D, 1NJ0E
	2WD ASCD FPUMP	1NJ2A, 1NJ2B, 1NJ2C, 1NJ2D, 1NJ2E
	2WD ICC	1NJ1A, 1NJ1B, 1NJ1C, 1NJ1D, 1NJ1E
	2WD ICC FPUMP	1NJ3A, 1NJ3B, 1NJ3C, 1NJ3D, 1NJ3E

Table A-1 is continued on the next page.

Table A-1 Continued

Model	Vehicle Configuration	Current ECM P/N 23710 -
2011 G37 Sedan	2WD ASCD	1NX0A
	2WD ASCD FPUMP	1NX2A
	2WD ICC	1NX1A
	2WD ICC FPUMP	1NX3A
	4WD ASCD	1NX6A
	4WD ICC	1NX7A
2011 G25 Sedan		ECM reprogramming is not needed for this Bulletin
2011 G37 Coupe	2WD ASCD	1VU0A
	2WD ASCD FPUMP	1VU2A
	2WD ICC	1VU1A
	2WD ICC FPUMP	1VU3A
	4WD ASCD	1VU6A
	4WD ICC	1VU7A
2011 G37 Coupe IPL		Not included in this Bulletin
2011 G37 Convertible	2WD ASCD	1NY0A
	2WD ASCD FPUMP	1NY2A
	2WD ICC	1NY1A
	2WD ICC FPUMP	1NY3A

5. When ECM reprogramming is complete, the screen in Figure 2 displays.

Print this page and attach it to the Repair Order for warranty documentation.



Figure 2A

6. Make sure to erase DTCs from all systems.

NOTE: During reprogramming, DTCs will set in several systems and must be erased.

7. Test drive the vehicle and confirm the incident is resolved.

