

**Classification:**  
AT09-017a

**Reference:**  
ITB10-006a

COPYRIGHT © NISSAN NORTH AMERICA, INC.  
**Date:**  
February 11, 2010

## 5 SPEED A/T DTC DIAGNOSES FOR P1701, P1702, P1703, P1704, P1705, P1754, P1759, P1764, P1769, P1774

This bulletin has been amended. Additional DTCs were applied. Discard all previous copies.

**APPLIED VEHICLES:** 2003 – 2010 Infiniti vehicles with 5-Speed A/T  
**APPLIED TRANSMISSION:** RE5R05A **ONLY**

### SERVICE INFORMATION

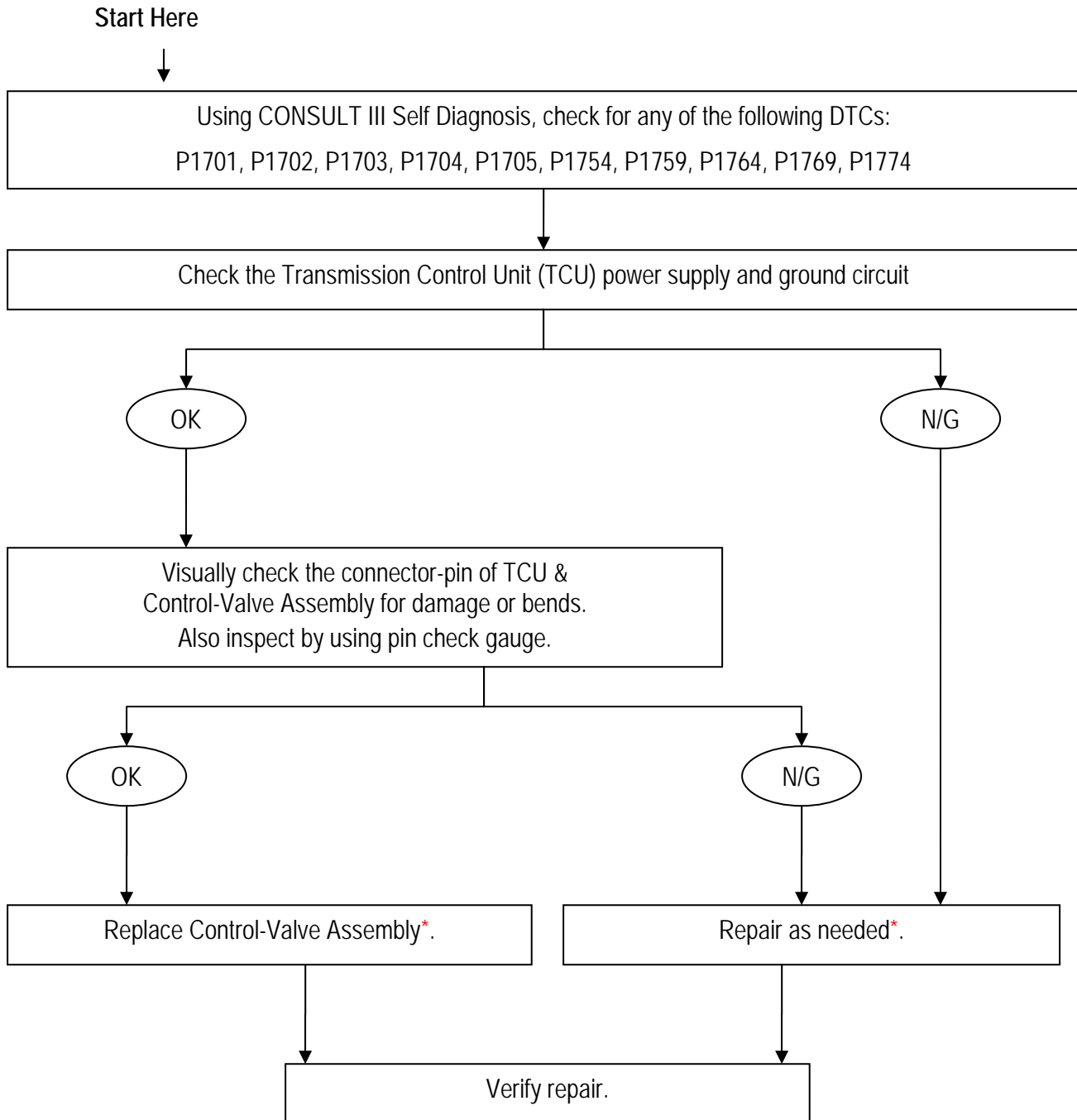
If one or more DTCs listed below are found stored in Self Diagnosis, use the **REPAIR FLOW CHART** on page 2 to assist in diagnosis.

- DTCs: P1701, P1702, P1703, P1704, P1705, P1754, P1759, P1764, P1769, P1774.

**IMPORTANT NOTE:** If DTC(s) not listed above is/are found stored in Self Diagnosis, this bulletin does not apply. Refer to ASIST and the appropriate Service Manual for diagnostic procedure(s) as needed.

Infiniti Bulletins are intended for use by qualified technicians, not 'do-it-yourselfers'. Qualified technicians are properly trained individuals who have the equipment, tools, safety instruction, and know-how to do a job properly and safely. NOTE: If you believe that a described condition may apply to a particular vehicle, DO NOT assume that it does. See your Infiniti dealer to determine if this applies to your vehicle.

## REPAIR FLOW CHART



\* Use standard repair and warranty procedures as applicable.