

Classification:

EL09-043

Reference:

ITB09-059

COPYRIGHT © NISSAN NORTH AMERICA, INC.

Date:

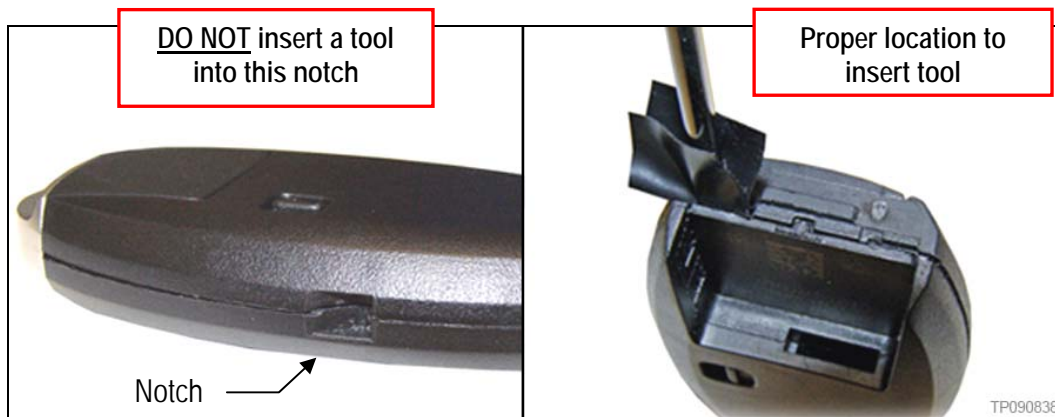
October 28, 2009

INTELLIGENT KEY BATTERY REPLACEMENT AND BATTERY DISCHARGE INDICATOR RESET

APPLIED VEHICLES: Vehicles equipped with the Intelligent Key type shown below.

IF YOU CONFIRM

- The Intelligent Key is the type that has a notch on each side.
And
- The battery in the Intelligent Key needs to be replaced for any reason.



ACTION

1. Open the Intelligent Key as described in the Service Procedure, and replace the battery.
2. Confirm the battery discharge indicator has reset/is not illuminated in the dot matrix display.

NOTES:

- **DO NOT** insert a tool into the notches of the Intelligent Key to pry it open, as this may damage the printed circuit board (PCB).
- The battery is a maintenance item and is not warrantable.

Infiniti Bulletins are intended for use by qualified technicians, not 'do-it-yourselfers'. Qualified technicians are properly trained individuals who have the equipment, tools, safety instruction, and know-how to do a job properly and safely. NOTE: If you believe that a described condition may apply to a particular vehicle, DO NOT assume that it does. See your Infiniti dealer to determine if this applies to your vehicle.

SERVICE PROCEDURE

1. Remove the mechanical key from the Intelligent Key.
2. Place a piece of tape on the end of a small flathead screwdriver.
3. Insert the screwdriver into either of the slots shown in Figure 1.



Figure 1

4. Turn the screwdriver until the two cover pieces separate (see Figure 2).
5. Replace the battery.
 - Make sure the + side of the battery faces the bottom cover piece.
6. Reattach the two cover pieces by pushing them together.
7. Turn on the vehicle and confirm the Intelligent Key battery discharge indicator is not illuminated in the dot matrix display.



Figure 2

8. If the indicator is still illuminated:
 - a) Turn off and exit the vehicle, making sure to close the door.
 - b) Re-enter the vehicle and turn it on. The indicator should be off.