

Classification:

Reference:

COPYRIGHT © NISSAN NORTH AMERICA, INC.

Date:

EC10-038a

ITB10-076a

April 26, 2011

## 2008-2010 G37; MIL "ON" WITH DTC P1421 STORED

This bulletin has been amended. Several changes have been made throughout the bulletin.  
Please discard all previous versions.

**APPLIED VEHICLES:** 2008 G37 Coupe (CV36)  
2009-2010 G37 Sedan, Coupe & Convertible (V36, CV36, HV36)

### IF YOU CONFIRM

An Applied Vehicle has the MIL "ON" with DTC P1421 (Cold Start Control) stored in the ECM.

### ACTIONS

1. Refer to step 2 in the ECM Reprogramming section of the Service Procedure to confirm this bulletin applies to the vehicle you are working on.
2. If this bulletin applies, reprogram the ECM.
3. If instructed, reprogram the TCM.

### CLAIMS INFORMATION

Submit a Primary Part (PP) type line claim using the following claims coding:

#### For ECM reprogramming:

DESCRIPTION	PFP	OP CODE	SYM	DIA	FRT
Reprogram ECM	(1)	DE97AA	HD	32	(2)

- (1) Reference the Repair Order and use the current ECM P/N written down in Step 2 of the Service Procedure as the PFP.
- (2) Reference the current Infiniti Warranty Flat Rate Manual and use the indicated FRT.

OR

#### For ECM & TCM reprogramming:

DESCRIPTION	PFP	OP CODE	SYM	DIA	FRT
Reprogram ECM and TCM	(1)	DX35AA	HD	32	0.8

- (1) Reference the Repair Order and use the current ECM P/N written down in Step 2 of the Service Procedure as the PFP.

**IMPORTANT:** The purpose of ACTIONS (above) is to give you a quick idea of the work you will be performing. You **MUST** closely follow the entire SERVICE PROCEDURE as it contains information that is essential to successfully completing this repair.

Infiniti Bulletins are intended for use by qualified technicians, not 'do-it-yourselfers'. Qualified technicians are properly trained individuals who have the equipment, tools, safety instruction, and know-how to do a job properly and safely. NOTE: If you believe that a described condition may apply to a particular vehicle, DO NOT assume that it does. See your Infiniti retailer to determine if this applies to your vehicle.

## SERVICE PROCEDURE

### ECM Reprogramming

1. Connect C-III to the vehicle to begin the reprogramming procedure.
  - If you are not familiar with the reprogramming procedure, click [here](#). This will link you to the "CONSULT- III (C-III) ECM Reprogramming" general procedure.

#### CAUTION:

- Connect a battery charger to the vehicle battery.  
If the 12V battery voltage drops during reprogramming, the ECM may be damaged.
- Be sure to turn OFF all vehicle electrical loads.  
If a vehicle electrical load remains ON, the ECM may be damaged.
- For ECM reprogramming, the C-III MUST be connected to the VI using the USB cable or the process may be interrupted and the ECM may be damaged.
- Be sure to connect the AC Adapter.  
If the C-III battery voltage drops during reprogramming, the process will be interrupted and the ECM may be damaged.
- Turn off all external Bluetooth® devices (e.g., cell phones, printers, etc.) within range of the C-III computer and the VI. If Bluetooth® signal waves are within range of the C-III during reprogramming, reprogramming may be interrupted and the ECM may be damaged.

2. When you get to the ECM Reprogramming screen shown in Figure 1, confirm this bulletin applies as follows.

A. On your C-III screen, look at the **Part Number** column (see Figure 1):

- If this column is **blank** (no part number listed), this **bulletin does not apply**. Close C-III and refer to ASIST for further diagnostic information.
- If a Part Number is listed, write it on the Repair Order.

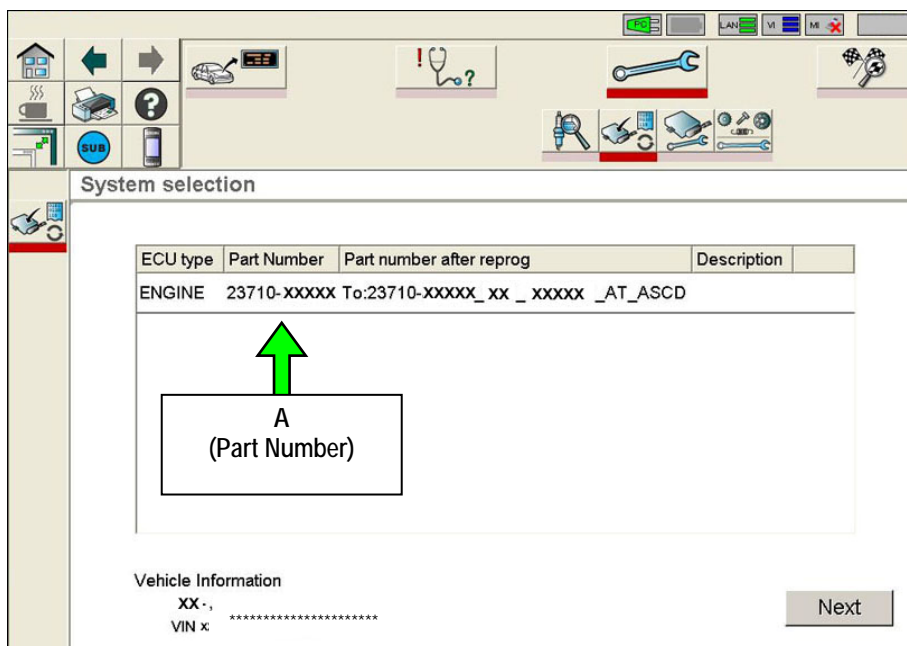


Figure 1

B. Compare the Part Number you wrote down to the numbers in the **Current ECM Part Number** column in **Table A**.

- If there is a match, this bulletin applies. Continue with the reprogramming procedure.

**NOTE:** If more than two lines (reprogramming options) display on your C-III screen, use the one that **does not** have either of the following messages:

- “Caution! Use ONLY with ITBXX-XXX”
- “Alert! For ECM Recovery ONLY”

- If there is not a match, this bulletin does not apply. Close C-III and refer to ASIST for further diagnostic information.

**Table A**

Model	Vehicle Configuration	Current ECM Part Number 23710 -
2008 G37 Coupe	ASCD/AT	JK70B, JK70C, JK70D, JK70E, JK86A, JK86B, JK86C, JK71B, JK71C, JK71D, JK71E, JK87A, JK87B, JK87C
	ICC/AT	JK72B, JK72C, JK72D, JK72E, JK88A, JK88B, JK88C, JK73B, JK73C, JK73D, JK73E, JK89A, JK89B, JK89C
	ASCD/MT	JK75B, JK75C, JK75D, JK75E, JK78A, JK78B
	ICC/MT	JK77B, JK77C, JK77D, JK77E, JK79A, JK79B
2009 G37 Sedan	2WD/ASCD/AT	1NC4A, 1NC4B, 1NC4C, 1NC4D, 1NC6A, 1NC6B, 1NC6C, 1NC6D
	2WD/ASCD/MT	1NC8A, 1NC8B, 1NC8C, 1NC8D
	2WD/ICC/AT	1NC5A, 1NC5B, 1NC5C, 1NC5D, 1NC7A, 1NC7B, 1NC7C, 1NC7D
	2WD/ICC/MT	1NC9A, 1NC9B, 1NC9C, 1NC9D
	4WD/ASCD	JU60A, JU60B, JU60C, JU60D
	4WD/ICC	JU61A, JU61B, JU61C, JU61D
2009 G37 Coupe	2WD/ASCD/AT	1ND4A, 1ND4B, 1ND4C, 1ND4D, 1ND6A, 1ND6B, 1ND6C, 1ND6D
	2WD/ASCD/MT	1ND8A, 1ND8B, 1ND8C, 1ND8D
	2WD/ICC/AT	1ND5A, 1ND5B, 1ND5C, 1ND5D, 1ND7A, 1ND7B, 1ND7C, 1ND7D
	2WD/ICC/MT	1ND9A, 1ND9B, 1ND9C, 1ND9D
	4WD/ASCD	JU70A, JU70B, JU70C, JU70D
	4WD/ICC	JU71A, JU71B, JU71C, JU71D
2009 G37 Convertible	ASCD/AT	JJ54A, JJ54B, JJ54C, JJ50A, JJ50B, JJ50C
	ASCD/MT	JJ53A, JJ53B, JJ53C
	ICC/AT	JJ55A, JJ55B, JJ55C, JJ51A, JJ51B, JJ51C
	ICC/MT	JJ52A, JJ52B, JJ52C

Table A continued on next page

Table A (CONTINUED)

Model	Vehicle Configuration	Current ECM Part Number 23710 -
2010 G37 Sedan	2WD/ASCD/AT	1NS0A, 1NS0B, 1NS0C, 1NS0D, 1NS0E, 1NS2A, 1NS2B, 1NS2C, 1NS2D, 1NS2E
	2WD/ASCD/MT	1NS4A, 1NS4B, 1NS4C
	2WD/ICC/AT	1NS1A, 1NS1B, 1NS1C, 1NS1D, 1NS1E, 1NS3A, 1NS3B, 1NS3C, 1NS3D, 1NS3E
	2WD/ICC/MT	1NS5A, 1NS5B, 1NS5C
	4WD/ASCD	1NS6A, 1NS6B, 1NS6C, 1NS6D, 1NS6E
	4WD/ICC	1NS7A, 1NS7B, 1NS7C, 1NS7D, 1NS7E
2010 G37 Coupe	2WD/ASCD/AT	1NG0A, 1NG0B, 1NG0C, 1NG0D, 1NG0E, 1NG2A, 1NG2B, 1NG2C, 1NG2D, 1NG2E
	2WD/ASCD/MT	1NG5A, 1NG5B, 1NG5C
	2WD/ICC/AT	1NG1A, 1NG1B, 1NG1C, 1NG1D, 1NG1E, 1NG3A, 1NG3B, 1NG3C, 1NG3D, 1NG3E
	2WD/ICC/MT	1NG6A, 1NG6B, 1NG6C
	4WD/ASCD	1NG7A, 1NG7B, 1NG7C, 1NG7D, 1NG7E
	4WD/ICC	1NG8A, 1NG8B, 1NG8C, 1NG8D, 1NG8E
2010 G37 Convertible	ASCD/AT	1NJ0A, 1NJ0B, 1NJ0C, 1NJ0D, 1NJ0E, 1NJ2A, 1NJ2B, 1NJ2C, 1NJ2D, 1NJ2E
	ASCD/MT	1NJ4A, 1NJ4B, 1NJ4C
	ICC/AT	1NJ1A, 1NJ1B, 1NJ1C, 1NJ1D, 1NJ1E, 1NJ3A, 1NJ3B, 1NJ3C, 1NJ3D, 1NJ3E
	ICC/MT	1NJ5A, 1NJ5B, 1NJ5C

3. If this bulletin applies and you have performed ECM reprogramming, the screen in Figure 2 appears when reprogramming is complete.

**NOTE:** If the screen in Figure 2 does not display (reprogramming does not complete), click [here](#). This links to the ECM Reprogram Interruption Recovery General Procedure.

- Print this screen and attach it to the Repair Order for Warranty documentation.



Figure 2

**2009-2010 G37 AT vehicles:** Proceed to **TCM Reprogramming** on page 6.

**All 2008 G37 vehicles, 2009-2010 G37 MT vehicles:** Perform steps 4 and 5, below. DO NOT perform TCM Reprogramming procedure.

4. Make sure to erase DTCs from all systems.

**NOTE:** During reprogramming, DTCs will set in several systems and must be erased.

5. Test drive the vehicle and make sure it operates correctly and the MIL is OFF.

- If the MIL comes ON, go back to ASIST for further diagnostic information.

## TCM Reprogramming (For 2009-2010 G37 AT vehicles ONLY)

- Make sure to erase DTCs from all systems.
- If you are not familiar with the TCM reprogramming procedure, click [here](#). This will link you to the "CONSULT- III (C-III) TCM Reprogramming" general procedure.

1. Restart the C-III session by selecting the Home icon in the upper left corner of the screen (see Figure 3).
2. Navigate C-III to the reprogramming screen shown in the Figure 3 example below.

### NOTE:

- **Do not** use the "Reprogramming / Programming" selection.
  - Select the Model and Model Year, and then navigate to **Direct Diagnosis > Reprogramming**.
  - TCM initialization is not needed for 7 Speed AT reprogramming.
3. On your C-III screen, look for a **Transmission** Part Number in the **Part Number** column (see Figure 3 example).
    - If there is no Transmission Part Number listed, proceed to step 6.
    - If a Transmission Part Number is listed, write it on the Repair Order, then proceed to step 4.

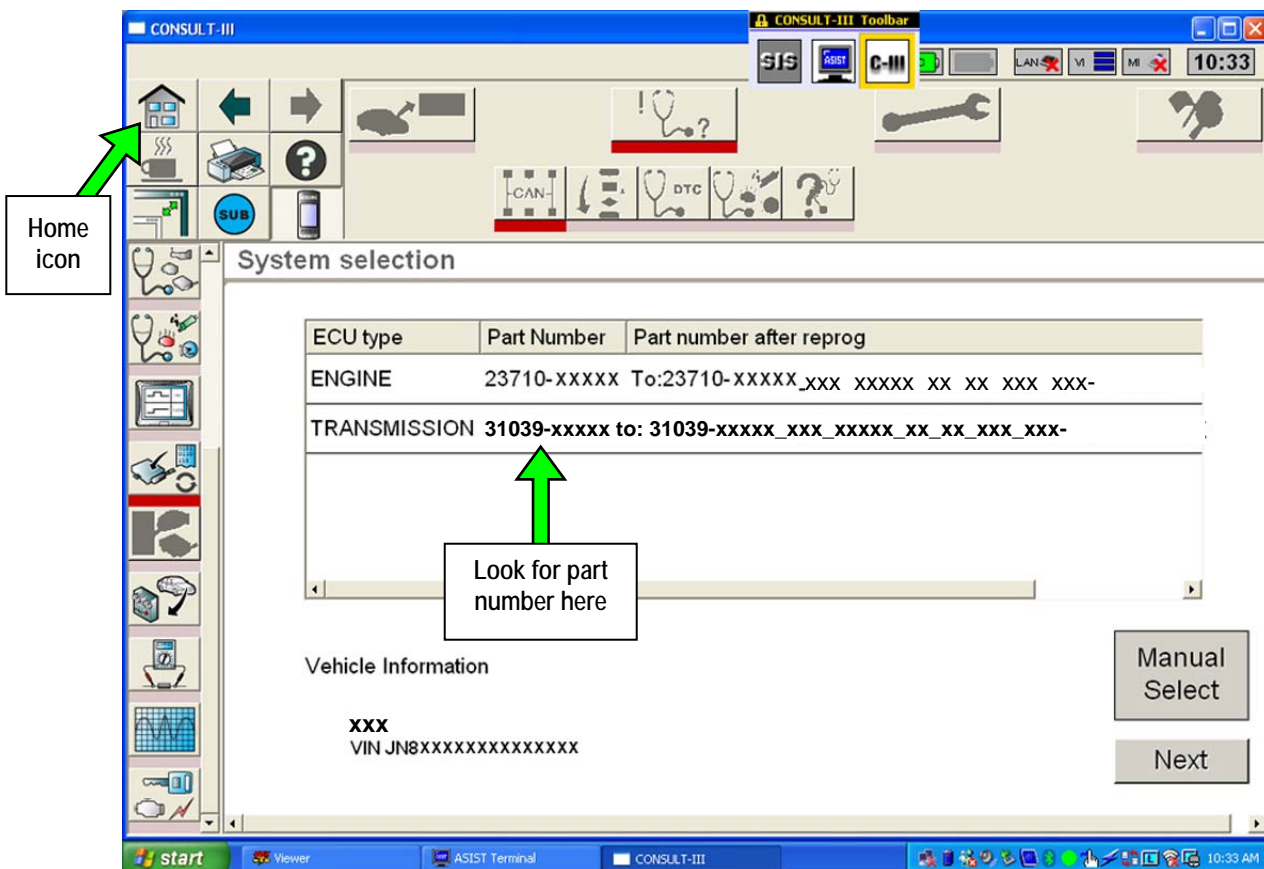


Figure 3

4. Compare the P/N you wrote down to the numbers in the **Current TCM Part Number** column in **Table B**, below.
  - If there is a match, continue with the TCM reprogramming procedure.
  - If there is not a match, proceed to step 6.

**Table B**

Model	Vehicle Configuration	Current TCM Part Number 31039 -
2009-2010 G37 Sedan	2WD	X211E, X184D, 3RX3D, 3RX0C, 1XJ4A
	4WD	X211B, X184E, 3RX0D, 3RX4A, 1XJ4B
2009-2010 G37 Coupe	2WD	X211C, X183B, 3RX1A, 3RX6D, 1XJ4E, X351B
	4WD	X211D, X183C, 3RX1B, 3RX6E, 1XJ5A, X351C
2009-2010 G37 Convertible	2WD	X212A, X185C, 3RX9C, 1XJ2D, X352C

5. If you have performed TCM reprogramming, the screen in Figure 4 displays when reprogramming is complete.
  - Print this screen and attach it to the Repair Order for warranty documentation.



Figure 4

6. Make sure to erase DTCs from all systems.

**NOTE:** During reprogramming, DTCs will set in several systems and must be erased.

7. Test drive the vehicle and make sure it operates correctly and the MIL is OFF.

- If the MIL comes ON, go back to ASIST for further diagnostic information.

