

Classification:

ST12-008

Reference:

ITB12-059

COPYRIGHT© NISSAN NORTH AMERICA, INC.

Date:

September 19, 2012

INFINITI; POWER STEERING SYSTEM SERVICE INFORMATION

APPLIED VEHICLES: All 2005 and later Infiniti vehicles equipped with hydraulic rack and pinion steering system

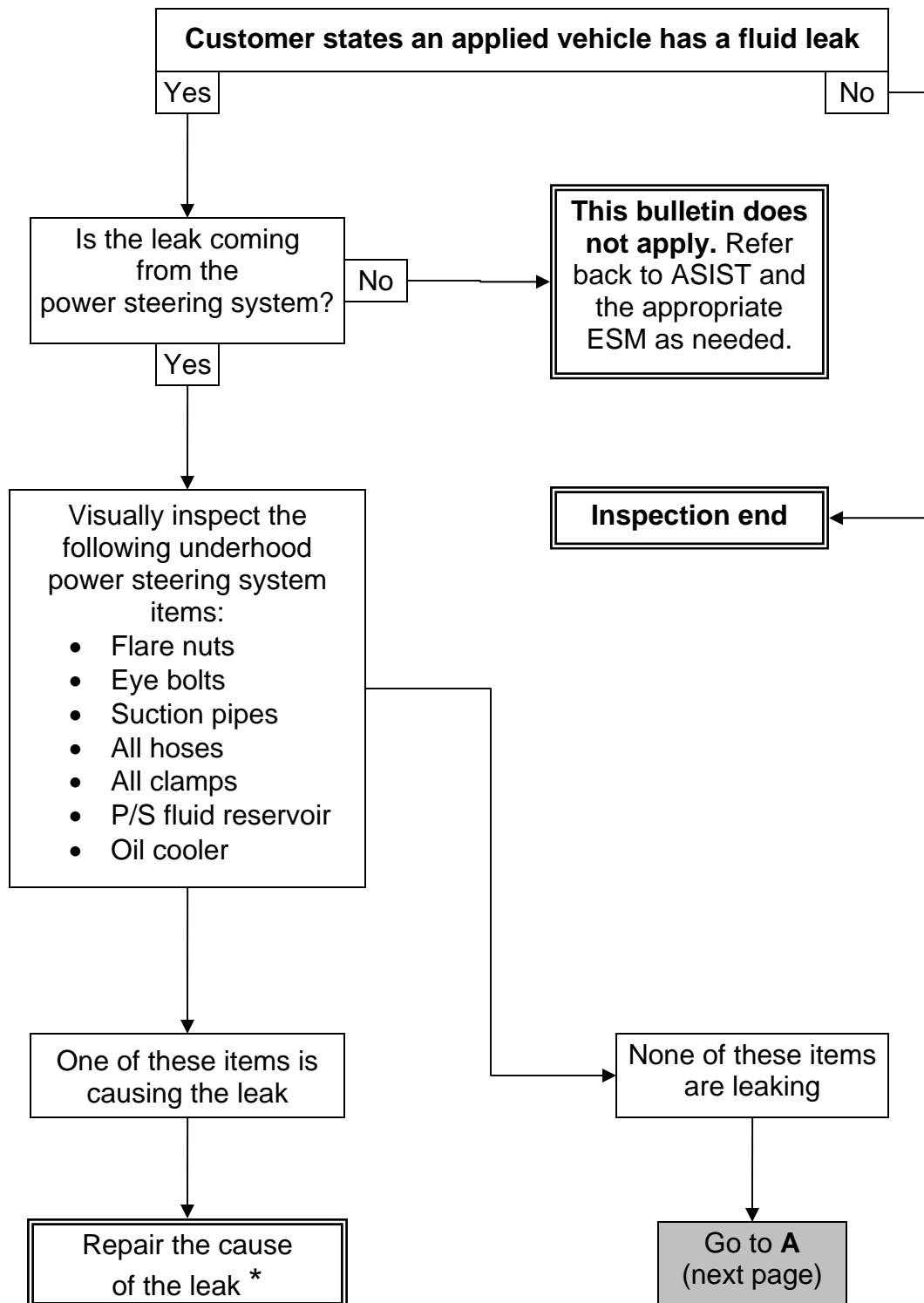
SERVICE INFORMATION

When diagnosing possible power steering leak issues, it is important to follow the **Inspection Flow Chart** provided in this bulletin.

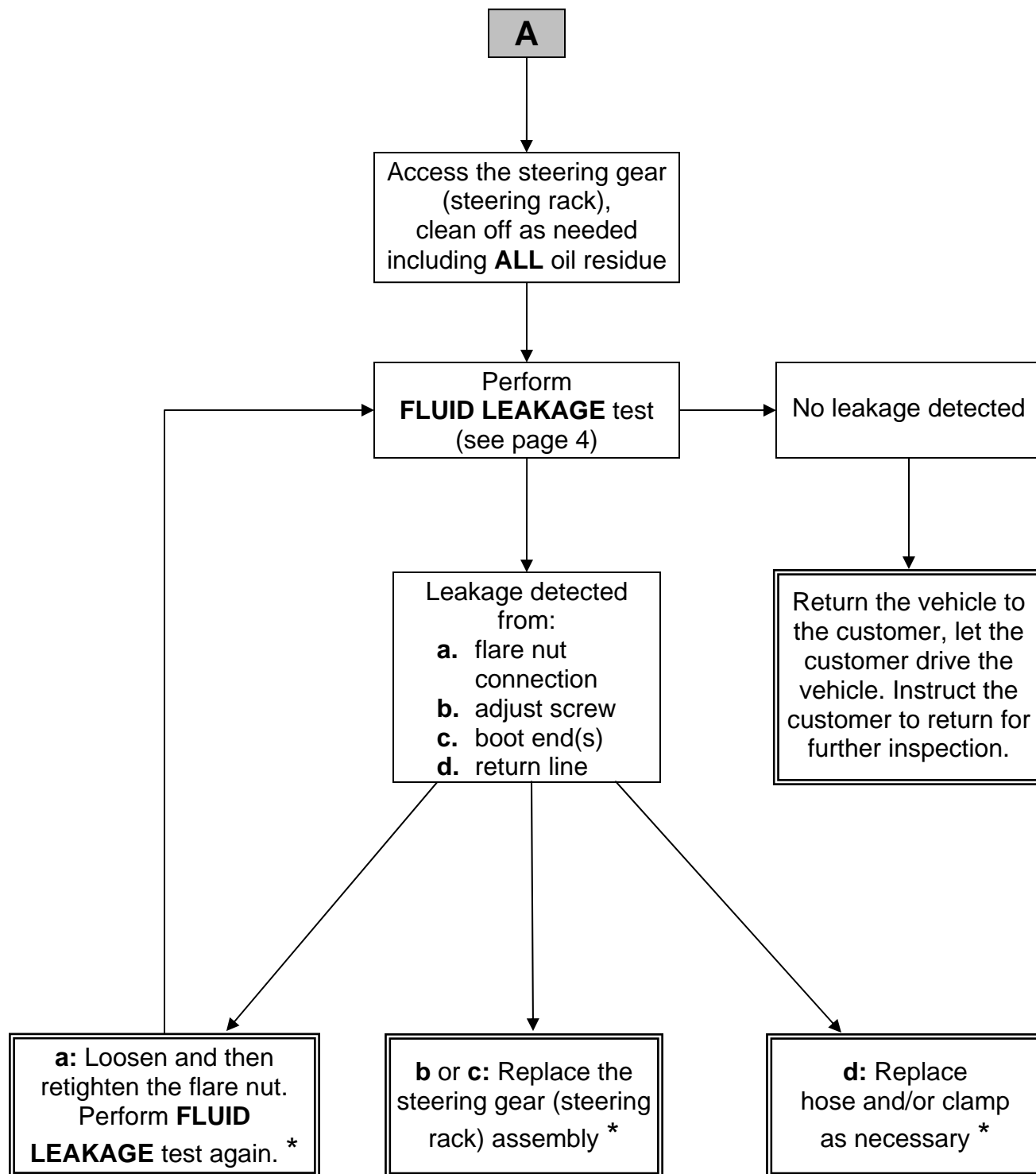
- See example photos starting on page 5.

Infiniti Bulletins are intended for use by qualified technicians, not 'do-it-yourselfers'. Qualified technicians are properly trained individuals who have the equipment, tools, safety instruction, and know-how to do a job properly and safely. **NOTE:** If you believe that a described condition may apply to a particular vehicle, **DO NOT** assume that it does. See your Infiniti dealer to determine if this applies to your vehicle.

Inspection Flow Chart



* Infiniti Standard Warranty procedures apply.



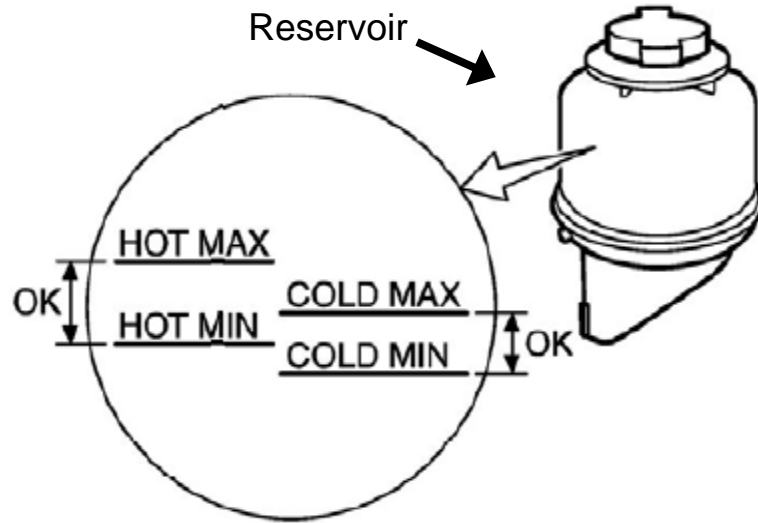
* Infiniti Standard Warranty procedures apply.

Fluid Leakage Inspection Preparation

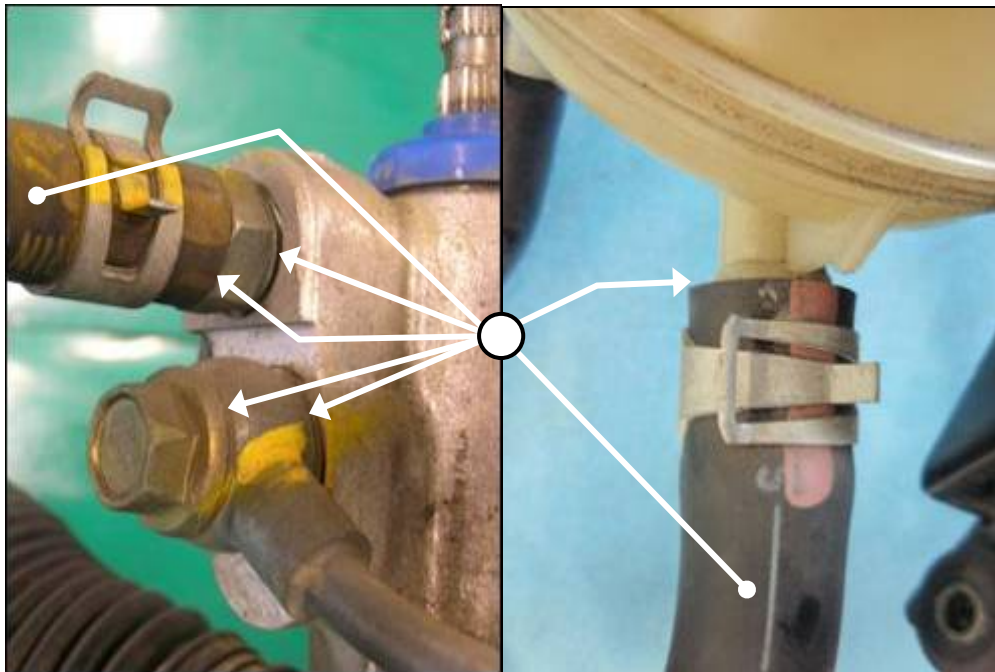
1. Verify the fluid level in the reservoir is within normal cold or hot range, as it applies.
2. Let the engine idle until the fluid temperature is within 50-80°C.
3. Turn the steering wheel from full left to full right 30 times.
4. Carefully hold the steering wheel for approximately five (5) seconds in the full (locked) left position, and then the locked right position.

CAUTION: Do not hold the steering wheel in a locked position for more than 10 seconds. Damage may occur to the power steering pump.

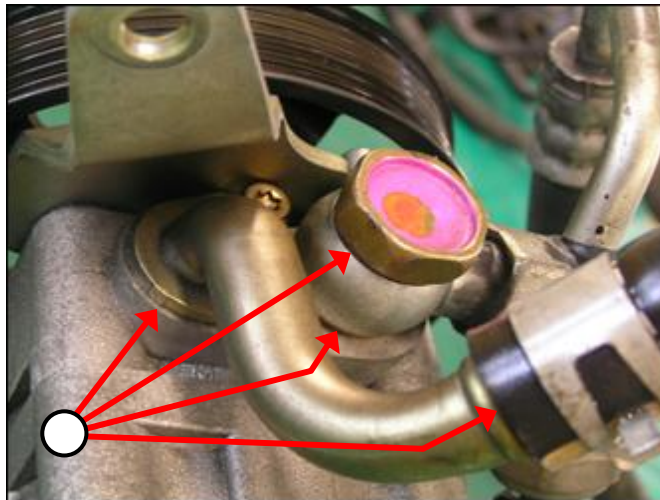
5. Let the engine idle for 10 minutes, and then inspect for leaks.
 - Verify the fluid level in the reservoir is within normal range.



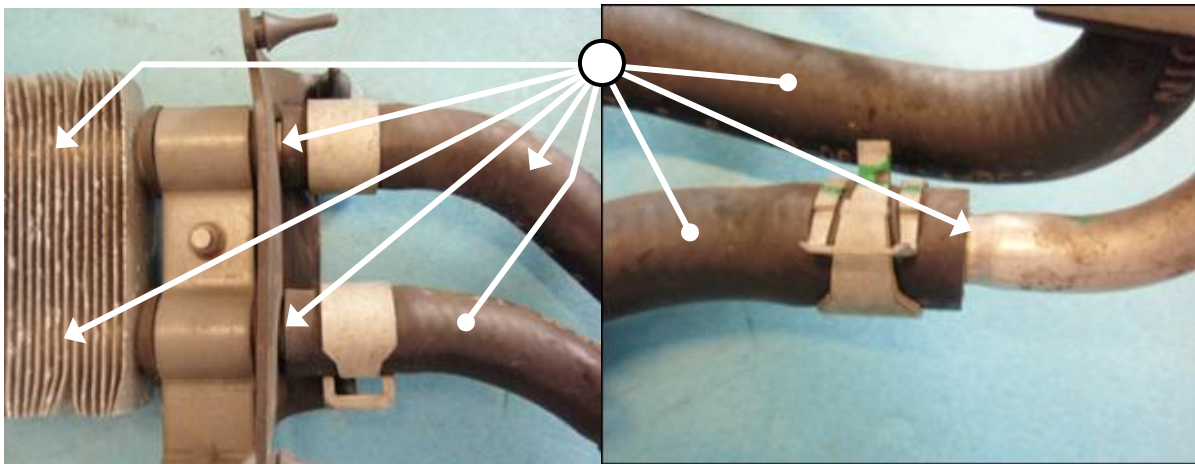
Make sure the fluid level is in normal range.



Inspect where noted.



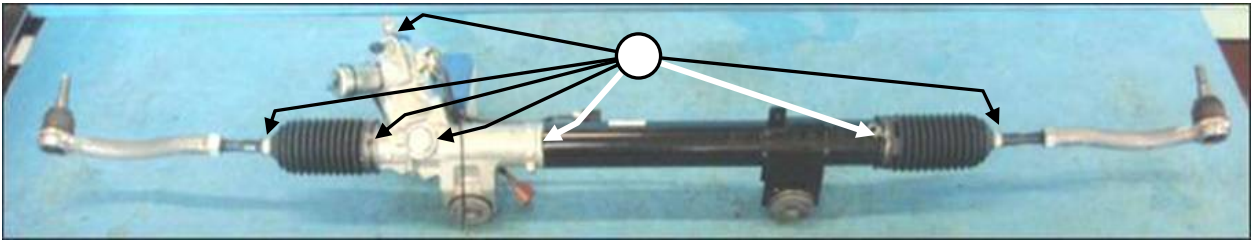
Inspect where noted.



Inspect where noted.



Inspect where noted.



Inspect where noted.

