

Classification:
EC13-018aReference:
ITB13-056aCOPYRIGHT © NISSAN NORTH AMERICA, INC.
Date:
February 13, 2014

INFINITI; MIL ON WITH DTC P0139 AND/OR P0159 STORED

This bulletin has been amended. The Title and APPLIED VEHICLES have been revised. Table A in the SERVICE PROCEDURE has been updated. Please discard all previous versions.

APPLIED VEHICLES: 2014 Q50 Sedan (V37) 2013 FX37 (S51) with VQ37HR engine only
2014 Q50 Hybrid (V37) 2014 QX70 (S51) with VQ37HR engine only
2012-2013 G37 Sedan (V36) 2013 EX37 (J50)
2012-2013 G37 Coupe (V36) 2014 QX50 (J50)
2012-2013 G37 Convertible (V36) 2013 M37 Sedan (Y51)
2014 Q60 Coupe (V36)
2014 Q60 Convertible (V36)

IF YOU CONFIRM:

The MIL is ON and one or both of the following DTCs are found stored in the ECM:

- P0139 (heated oxygen sensor 2 (B1) circuit slow response)
- P0159 (heated oxygen sensor 2 (B2) circuit slow response)

ACTION:

1. Confirm this bulletin applies.
 - Compare the vehicle's current ECM part number to those listed in **Table A** (see page 5).
2. If the ECM part number does not match one listed in **Table A**, this bulletin does not apply. Go back to ASIST for further diagnostic and repair information.
3. If this bulletin applies, reprogram the ECM.

IMPORTANT: The purpose of **ACTION** (above) is to give you a quick idea of the work you will be performing. You **MUST** closely follow the entire **SERVICE PROCEDURE** as it contains information that is essential to successfully completing this repair.

Infiniti Bulletins are intended for use by qualified technicians, not 'do-it-yourselfers'. Qualified technicians are properly trained individuals who have the equipment, tools, safety instruction, and know-how to do a job properly and safely. NOTE: If you believe that a described condition may apply to a particular vehicle, DO NOT assume that it does. See your Infiniti dealer to determine if this applies to your vehicle.

SERVICE PROCEDURE

NOTE:

- Most instructions for reprogramming with CONSULT-III plus (C-III plus) are displayed on the CONSULT PC screen.
- If you are not familiar with the reprogramming procedure, click [here](#). This will link you to the "CONSULT- III plus (C-III plus) ECM Reprogramming" general procedure.
- Take the vehicle for a 10 minute drive in order to meet the following Idle Air Volume Learn (IAVL) conditions:
 - Engine coolant temperature: 70 - 105°C (158 - 221°F)
 - Battery voltage: More than 12.9V (At idle)
 - Transmission: Warmed up



Figure A

- After reprogramming is complete, you will be required to perform Throttle Valve Closed Position, Idle Air Volume Learn, Accelerator Closed Position, and DTC erase.

CAUTION:

- Connect the GR8 to the vehicle 12 volt battery and set to ECM power supply mode. If the vehicle battery voltage drops below 12.0V or above 15.5V during reprogramming, the ECM may be damaged.
- Be sure to turn OFF all vehicle electrical loads. If a vehicle electrical load remains ON, the ECM may be damaged.
- Be sure to connect the AC Adapter. If the CONSULT PC battery voltage drops during reprogramming, the process will be interrupted and the ECM may be damaged.
- Turn off all external Bluetooth® devices (e.g., cell phones, printers, etc.) within range of the CONSULT PC and the VI. If Bluetooth® signal waves are within range of the CONSULT PC during reprogramming, reprogramming may be interrupted and the ECM may be damaged.

1. Connect the CONSULT PC to the vehicle to begin the reprogramming procedure.
2. Start C-III plus.
3. Wait for the plus VI to be recognized / connected.
 - The serial number will display when the plus VI is recognized / connected.
4. Select **Re/programming, Configuration**.

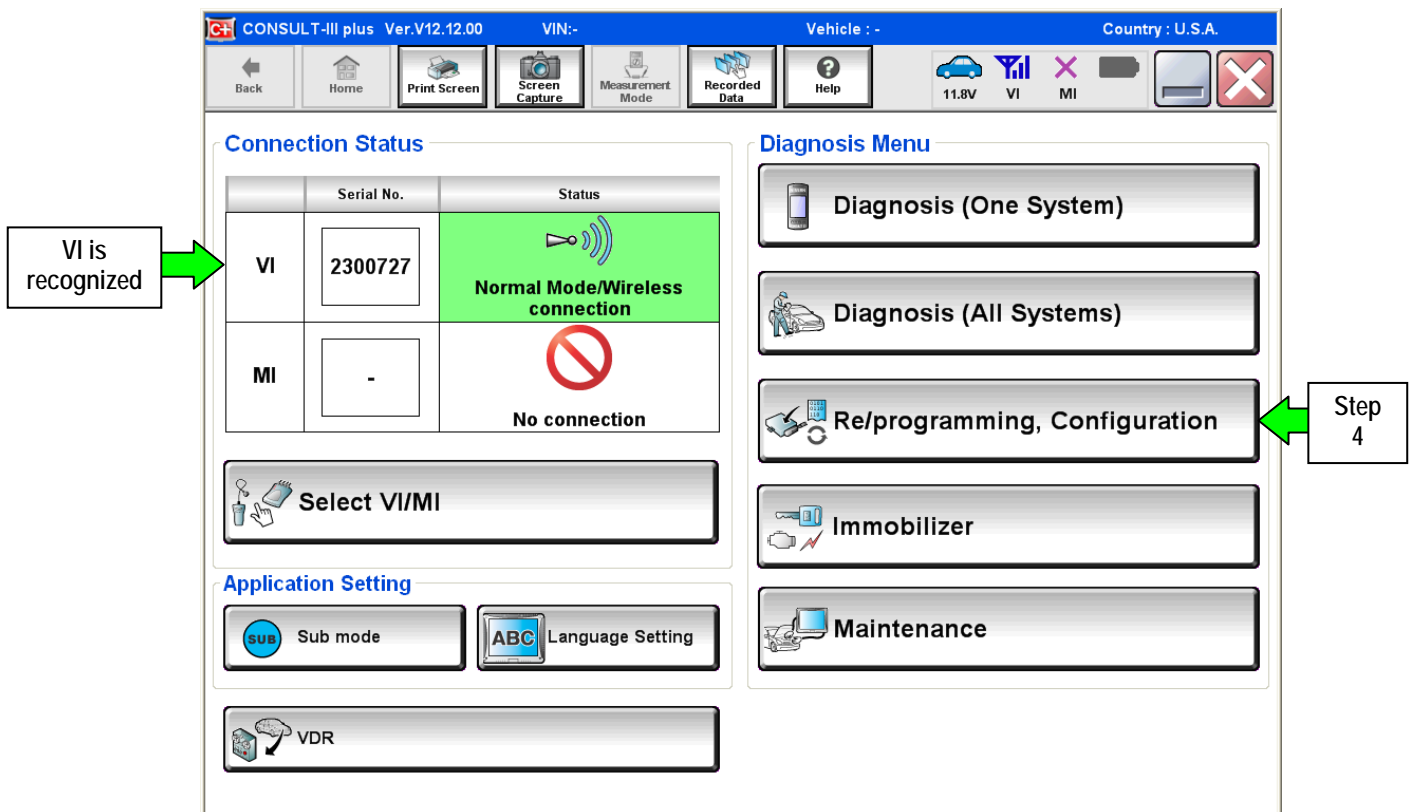


Figure 1

5. Follow the on-screen instructions and navigate the C-III plus to the screen shown in Figure 2 on the next page.

6. When you get to the screen shown in Figure 2, confirm this bulletin applies as follows.

A. Find the ECM **Part Number** and write it on the repair order.

NOTE: This is the current ECM Part Number (P/N).

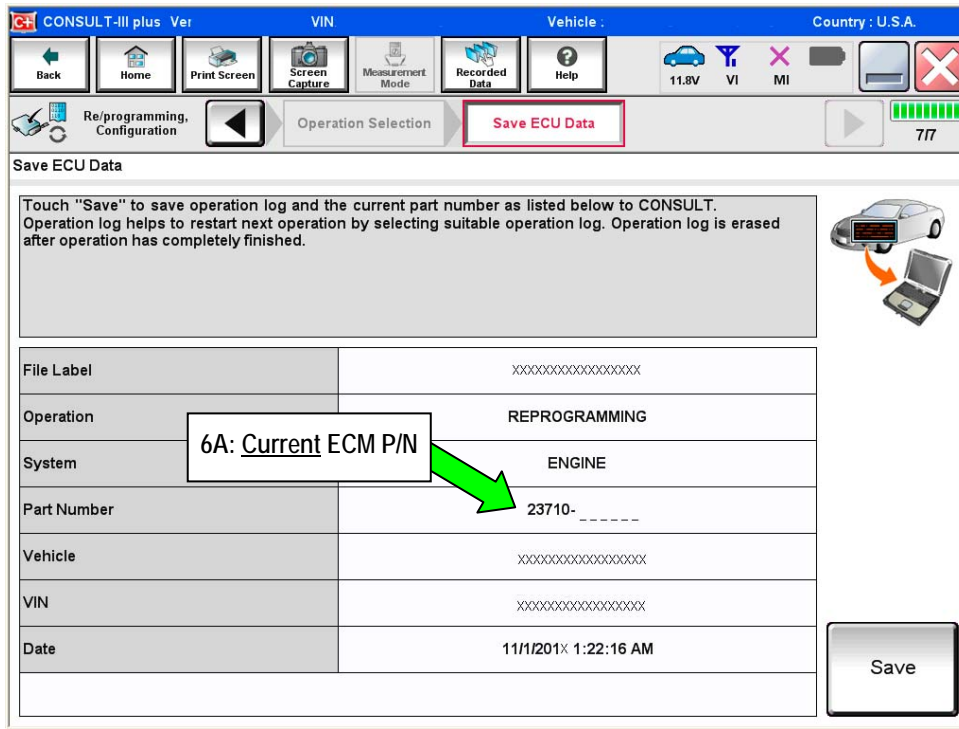


Figure 2

B. Compare the P/N you wrote down to the numbers in the **Current ECM Part Number** column in **Table A** below and on the next page.

- If there is a match, this bulletin applies. Continue with the reprogramming procedure.
- If there is not a match, this bulletin does not apply. Close C-III plus and refer to ASIST for further diagnostic information.

Table A

Model	Model Year	Current ECM Part Number: 23710-
Q50 Sedan	2014	4GA7A, 4GA8A, 4GA9A
		4GA7B, 4GA8B, 4GA9B
		4GB1A, 4GB2A, 4GB3A
		4GB1B, 4GB2B, 4GB3B
Q50 Hybrid	2014	4GA0A, 4GA1A
		4GA0B, 4GA1B

Table A (cont'd)

Model	Model Year	Current ECM Part Number: 23710-
Q60 Coupe	2014	1A40A, 1A40B
		3WJ0A, 3WJ1A, 3WJ2A, 3WJ3A, 3WJ4A, 3WJ5A, 3WJ6A
Q60 Convertible	2014	1A40C
		3WK0A, 3WK1A, 3WK2A, 3WK3A, 3WK4A
G37 Sedan	2013	3LW0A, 3LW1A, 3LW2A, 3LW3A, 3LW4A, 3LW5A, 3LW6A
	2012	EY00A, EY01A, EY02A, EY03A, EY04A, EY05A, EY06A
		EY00B, EY01B, EY02B, EY03B, EY04B, EY05B, EY06B
		EY00C, EY01C, EY02C, EY03C, EY04C, EY05C, EY06C
G37 Coupe	2013	1A36D, 1A36E
		JK35A, JK36A, JK37A, JK38A, JK39A, JK50A, JK51A
	2012	1A34C, 1A34D, 1A37A, 1A37B, 1A39B, 1A39C
		1JT0A, 1JT1A, 1JT2A, 1JT3A, 1JT4A, 1JT5A, 1JT6A
		1JT0B, 1JT1B, 1JT2B, 1JT3B, 1JT4B, 1JT5B, 1JT6B
		1JT0C, 1JT1C, 1JT2C, 1JT3C, 1JT4C, 1JT5C, 1JT6C
G37 Convertible	2013	1A34E
		CT60A, CT61A, CT62A, CT63A, CT64A
	2012	1VZ0A, 1VZ1A, 1VZ2A, 1VZ3A, 1VZ4A
		1VZ0B, 1VZ1B, 1VZ2B, 1VZ3B, 1VZ4B
		1VZ0C, 1VZ1C, 1VZ2C, 1VZ3C, 1VZ4C
		1VZ0D, 1VZ1D, 1VZ2D, 1VZ3D
2014 QX70	2014	3GT0A, 3GT1A, 3GT2A, 3GT3A
2013 FX37	2013	1WY4A, 1WY5A, 1WY6A, 1WY7A
2014 QX50	2014	3WW0A, 3WW1A, 3WW2A, 3WW3A
2013 EX37	2013	1BN1A, 1BN2A, 1BN3A, 1BN4A
2013 M37	2013	1PR0A, 1PR1A, 1PR2A, 1PR3A, 1PR4A, 1PR5A
		1PR0B, 1PR1B, 1PR2B, 1PR3B, 1PR4B, 1PR5B

7. Follow the on-screen instructions to navigate C-III plus and reprogram the ECM.

NOTE:

- In some cases, more than one new P/N for reprogramming is available.
 - In this case, the screen in Figure 3 displays.
 - Select and use the reprogramming option that **does not** have the message "Caution! Use ONLY with ITBXX-XXX".
- If you get this screen and it is blank (no reprogramming listed), it means there is no reprogramming available for this vehicle. Close C-III plus and refer back to ASIST for further diagnosis.

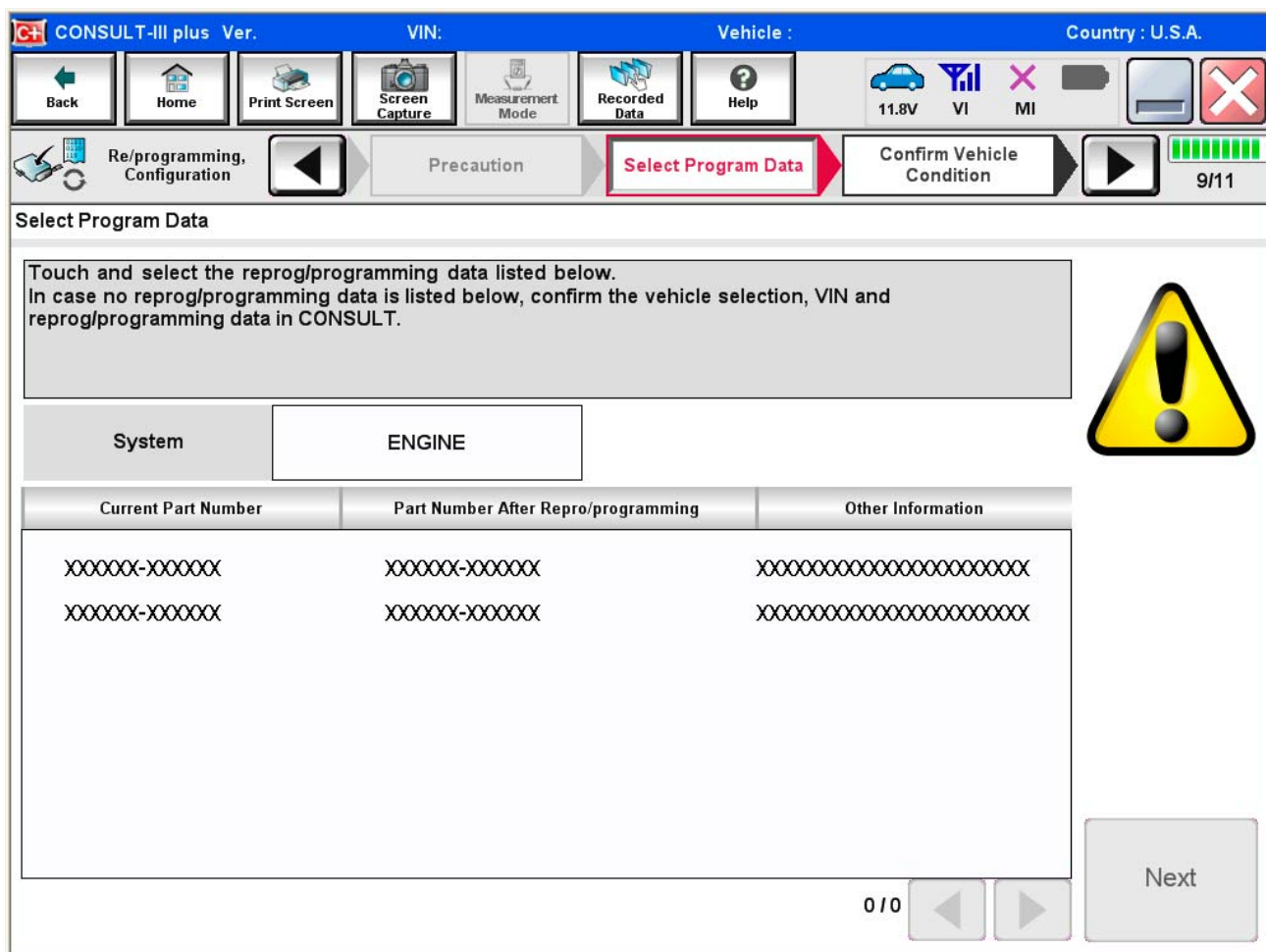


Figure 3

8. When the screen in Figure 4 displays, reprogramming is complete.

NOTE: If the screen in Figure 4 does not display (reprogramming does not complete), refer to the information on page 8.

9. Disconnect the battery charger from the vehicle.

10. Select **Next**.

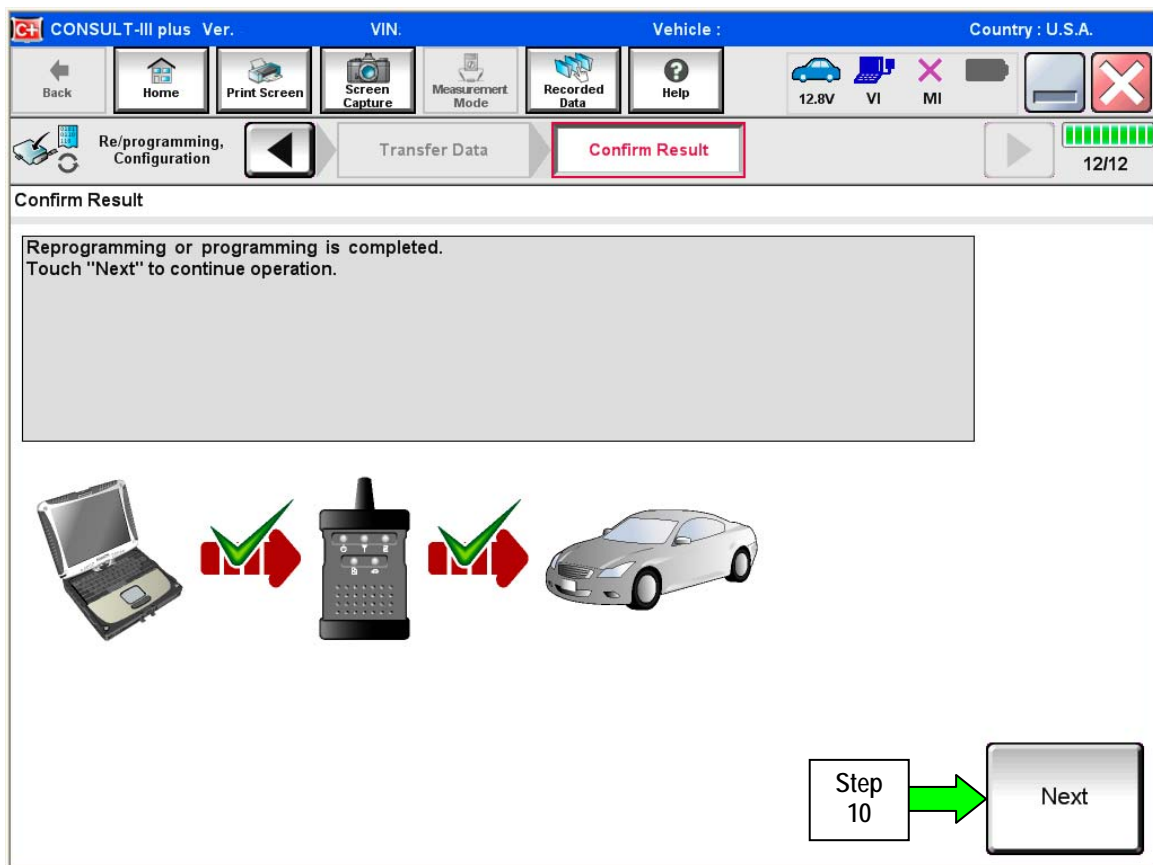


Figure 4

NOTE:

- In the next steps, starting on page 9, you will perform Throttle Valve Closed Position, Idle Air Volume Learn, Accelerator Closed Position, and DTC erase.
- These operations are required before C-III plus will provide the final reprogramming confirmation report.

ECM recovery:

Do not disconnect plus VI or shut down CONSULT III plus if reprogramming does not complete.

If reprogramming does not complete and the “!?” icon displays as shown in Figure 5:

- Check battery voltage (12.0–15.5 V).
- Ignition is ON, engine OFF.
- External Bluetooth® devices are OFF.
- All electrical loads are OFF.
- Select retry and follow the on screen instructions.
- “Retry” may not go through on first attempt and can be selected more than once.

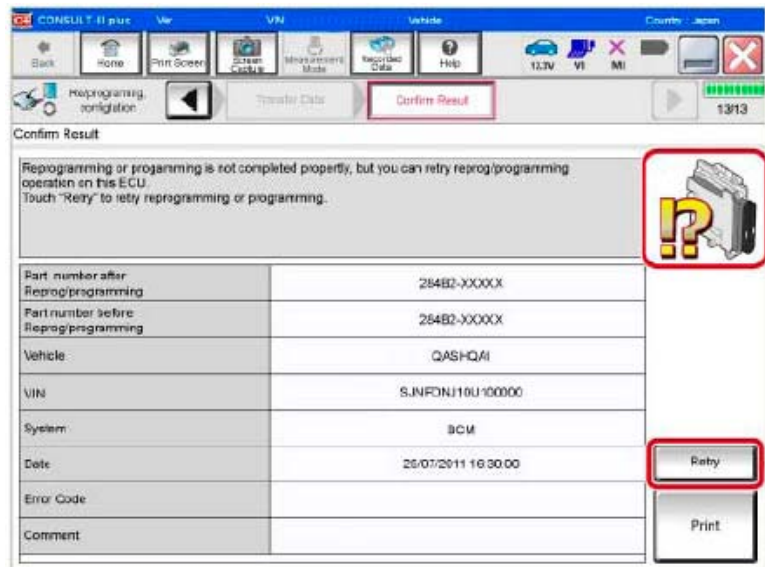


Figure 5

If reprogramming does not complete and the “X” icon displays as shown in Figure 6:

- Check battery voltage (12.0 – 15.5 V).
- CONSULT A/C adapter is plugged in.
- Ignition is ON, engine OFF.
- Transmission is in Park.
- All C-III plus / VI cables are securely connected.
- All C-III plus updates are installed.
- Select Home, and restart the reprogram procedure from the beginning.

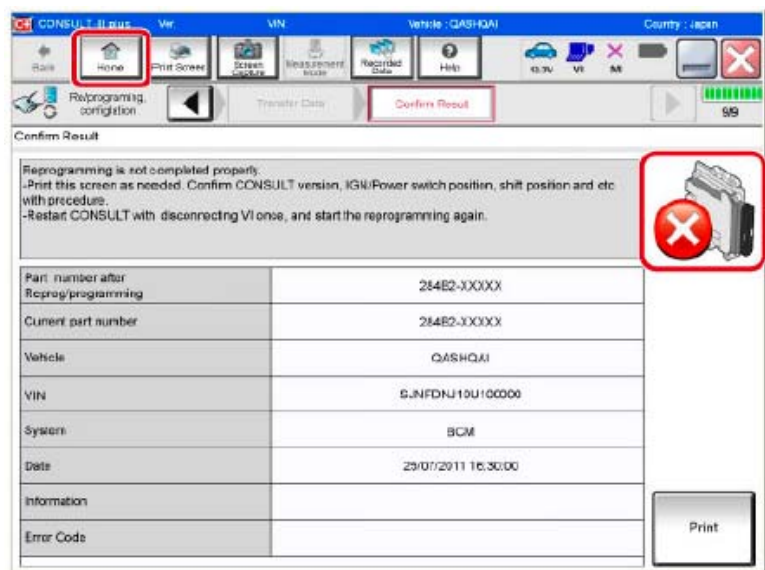


Figure 6

11. Follow the on-screen instructions to perform the following:

- Throttle Valve Closed Position
- Idle Air Volume Learn (IAVL)

NOTE:

- Listed below are common conditions required for IAVL to complete.
- If IAVL does not complete within a few minutes, a condition may be out of range.
- Refer to the appropriate Electronic Service Manual (ESM) for specific conditions required for the vehicle you are working on.
 - Engine coolant temperature: 70 -105° C (158 -221°F)
 - Battery voltage: More than 12.9V (At idle)
 - Selector lever: P or N
 - Electric load switch: OFF (Air conditioner, headlamp, rear window defogger)
 - Steering wheel: Neutral (Straight-ahead position)
 - Vehicle speed: Stopped
 - Transmission: Warmed up
- Accelerator Pedal Close Position Learning
- Erase DTCs

Continue to the next page.

12. When the entire reprogramming process is complete, the screen in Figure 7 will display.
13. Verify the before and after part numbers are different.
14. Print a copy of this screen (Figure 7) and attach it to the repair order for warranty documentation.
15. Select **Confirm**.

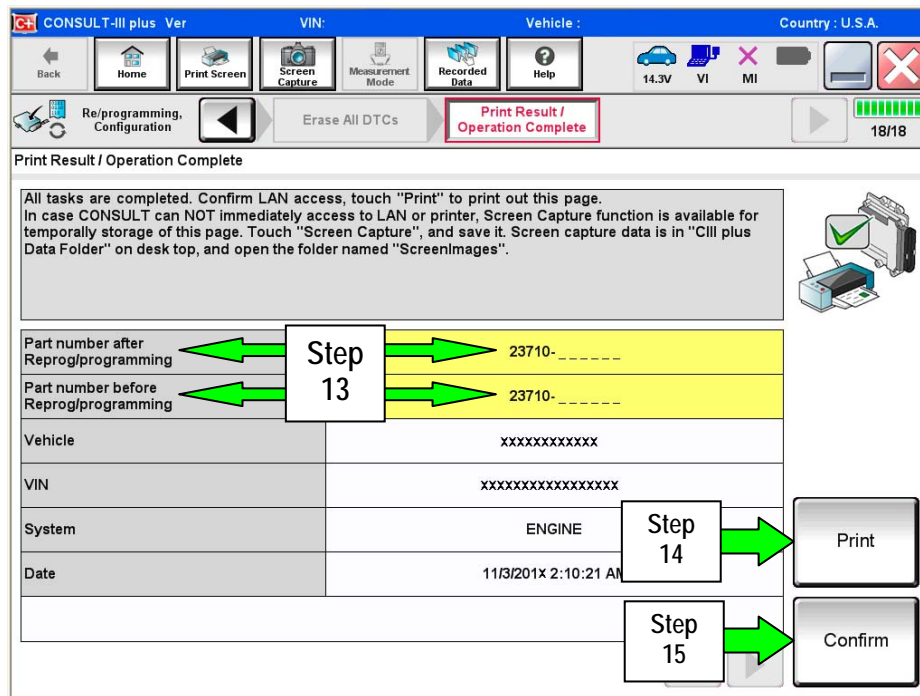


Figure 7

16. Close C-III plus.
17. Turn the ignition OFF.
18. Disconnect the plus VI from the vehicle.
19. Test drive the vehicle and make sure it operates correctly and the MIL is OFF.
 - If the MIL comes ON, go back to ASIST for further diagnostic information.
 - Diagnosis and repairs beyond ECM reprogramming are not covered by this bulletin.

CLAIMS INFORMATION

Submit a Primary Part (PP) type line claim using the following claims coding:

DESCRIPTION	PFP	OP CODE	SYM	DIA	FRT
Reprogram Engine Control Module	(1)	DE97AA	ZE	32	(2) (3)

- (1) Refer to the electronic parts catalog (FAST) and use the ECM assembly part number as the Primary Failed Part (PFP).
- (2) Reference the current Infiniti Warranty Flat Rate Manual and use the indicated FRT.
- (3) FRT allows adequate time to access DTC codes and reprogram ECM. No other diagnostic procedures subsequently required. Do NOT claim any Diagnostic Op Codes with this claim.