

Classification:

Reference:

COPYRIGHT© NISSAN NORTH AMERICA, INC.

Date:

BT14-020

ITB14-030

July 7, 2014

G37 AND Q60 CONVERTIBLES; RETRACTABLE HARD TOP INITIALIZATION SERVICE INFORMATION

APPLIED VEHICLES: 2009-2013 G37 Convertible (V36)
2014-2015 Q60 Convertible (V36)

SERVICE INFORMATION

If the battery becomes disconnected or discharged while the retractable hard top is in any position other than fully closed or fully retracted, the retractable hard top control may stop operating and the following DTCs will be stored: B1707 and B1708. Other retractable hard top related DTCs may also be found stored. To restore operation: (1) close the roof fully manually; (2) erase the DTC(s); and (3) perform hard top control unit initialization.

This bulletin provides the procedures to restore retractable hard top control operation.

Infiniti Bulletins are intended for use by qualified technicians, not 'do-it-yourselfers'. Qualified technicians are properly trained individuals who have the equipment, tools, safety instruction, and know-how to do a job properly and safely. **NOTE:** If you believe that a described condition may apply to a particular vehicle, DO NOT assume that it does. See your Infiniti dealer to determine if this applies to your vehicle.

SERVICE PROCEDURE

NOTE: Before starting the service procedure, make sure the battery is sufficiently charged and both battery cables are connected.

CAUTION: Use of the Work Support feature in this bulletin may result in the retractable hard top functioning out of sequence. If interference conditions occur with the parcel shelf, flipper doors, and trunk/roof latches, damage may occur.

1. Connect the GR-8 (Battery and Electrical Diagnostic Station) or suitable battery charger to the vehicle battery, and then set at low charge.
2. Connect the CONSULT PC and plus VI to the vehicle, and then start CONSULT-III plus (C-III plus).
- 2a. Wait for the plus VI to be recognized / connected.
 - The serial number will display when the plus VI is recognized / connected.
3. Select **Diagnosis (One System)**.

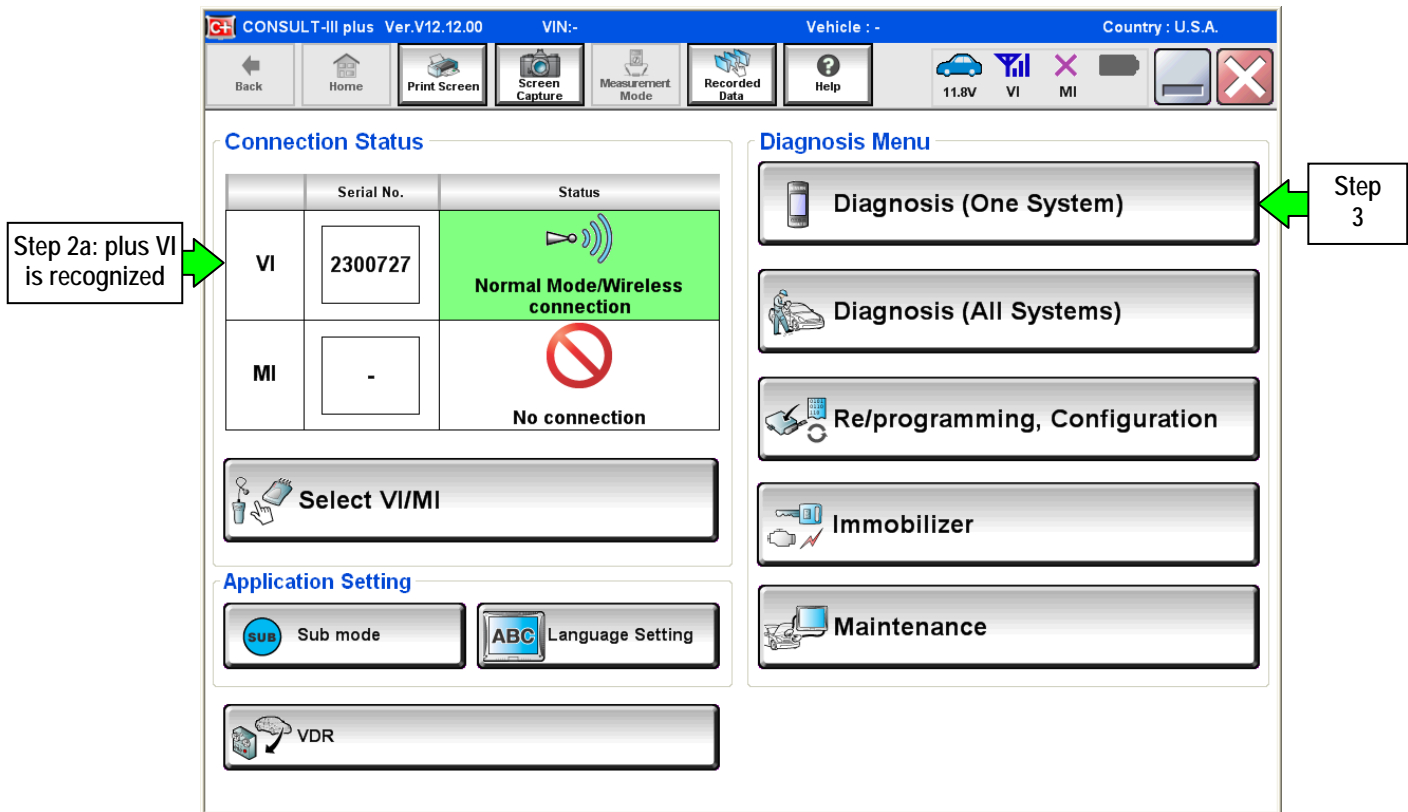


Figure 1

4. Select CONVERTIBLE ROOF.

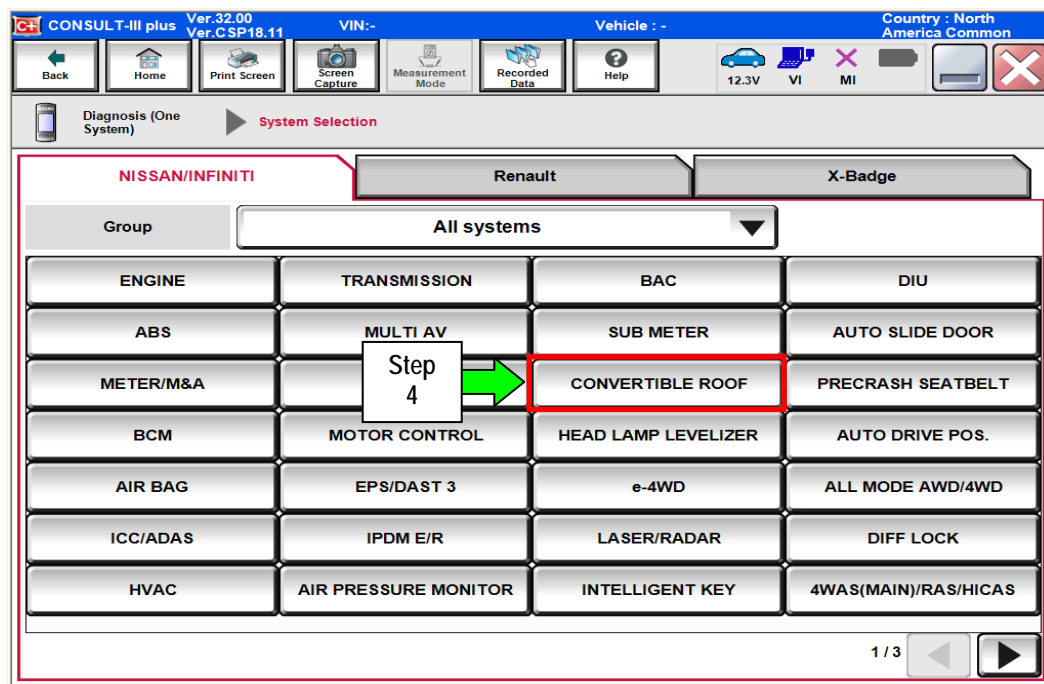


Figure 2

5. Select ERASE.

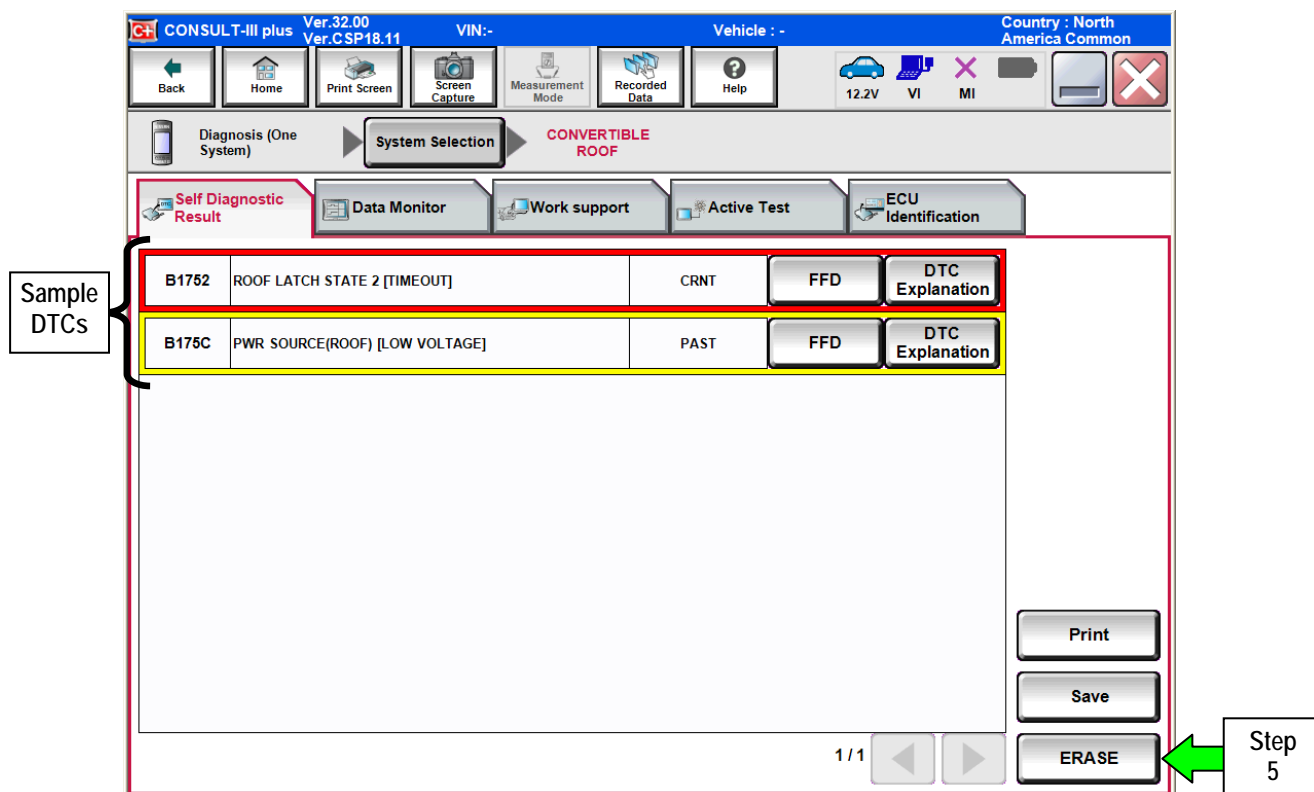


Figure 3

6. Select Erase.

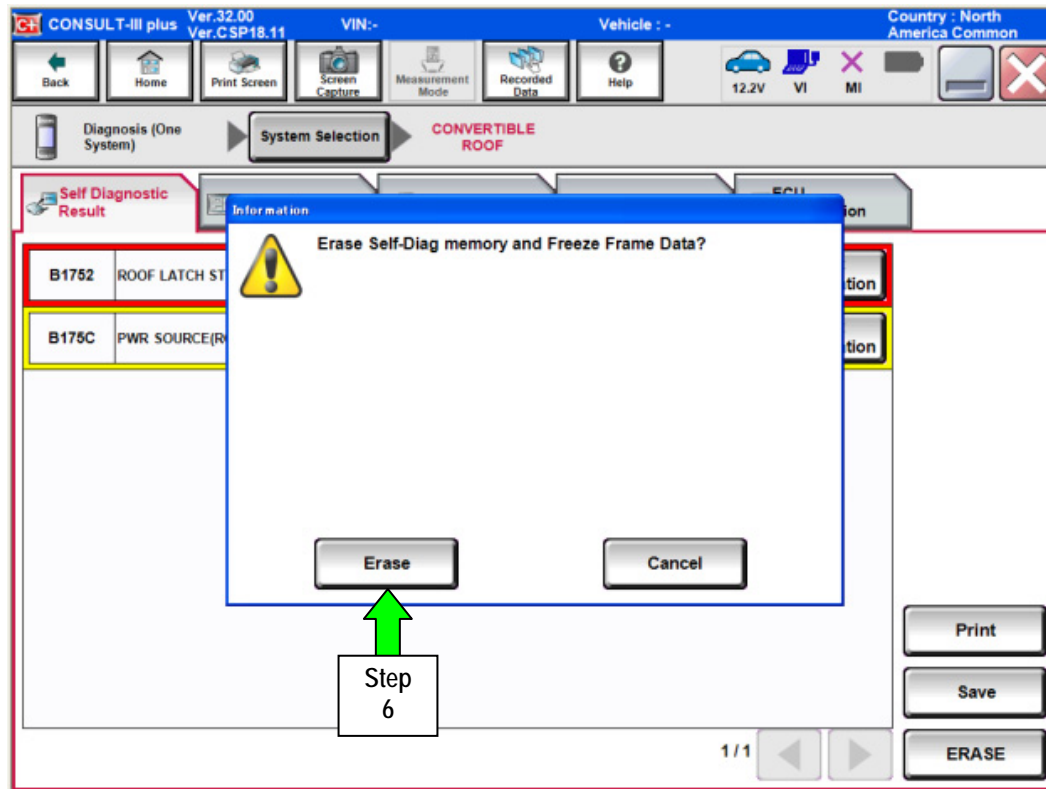


Figure 4

7. Select Close.

NOTE: DTCs may not erase. This is OK.

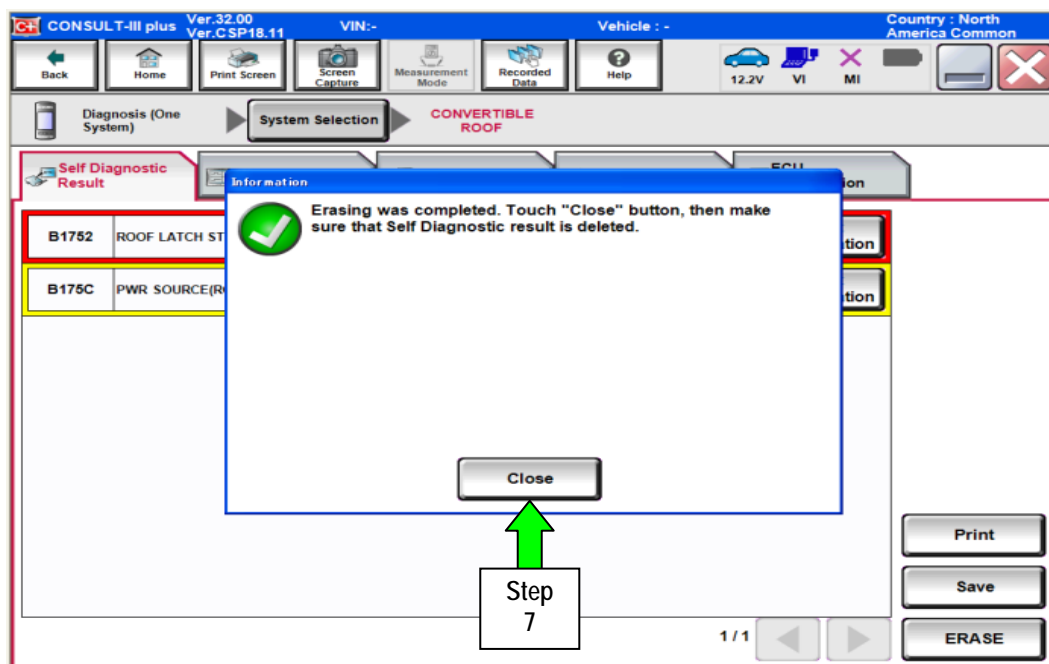


Figure 5

8. Using C-III plus, fully close the retractable hard top (roof).

- Use the list below to determine where to start manually closing the roof.

NOTE:

- The roof will need to be closed in the correct order of each related component from OPEN to CLOSE. For example, if the trunk is fully lifted but the flipper doors are closed halfway, the first component to be moved (closed) would be the flipper doors, and then the roof latches, etc. Which component needs to be closed first will depend on the roof's current "state" of open position. By using the list below, first determine the roof's state, and then close the roof starting at the determined position.
- When giving the command in C-III plus to open, close, go up, down, etc. a given component, the related on-screen button may need to be clicked (tapped) rapidly multiple times to complete the requested sequence. Pressing once or pressing and holding down may not work.

CAUTION: Use of the Work Support feature in this bulletin may result in the retractable hard top functioning out of sequence. If interference conditions occur with the parcel shelf, flipper doors, and trunk/roof latches, damage may occur.

From the full open position (roof stored in the trunk), the components are being operated toward the closed position in the following order:

- a. trunk opener (go to page 6)
- b. trunk open (go to page 9)
- c. parcel shelf angle direction vertical (go to page 9)
- d. roof latches open (go to page 8)
- e. parcel shelf down halfway (go to page 9)
- f. roof close (go to page 9)
- g. parcel shelf down completely (go to page 9)
- h. roof latches close (go to page 8)
- i. flipper doors down (go to page 7)
- j. parcel shelf angle direction horizontal (go to page 9)
- k. trunk close (go to page 9)
- L. parcel shelf up (go to page 9)

Trunk Opener

1. Under the **Work support** tab, select **TRUNK OPENER**, and then **Start**.

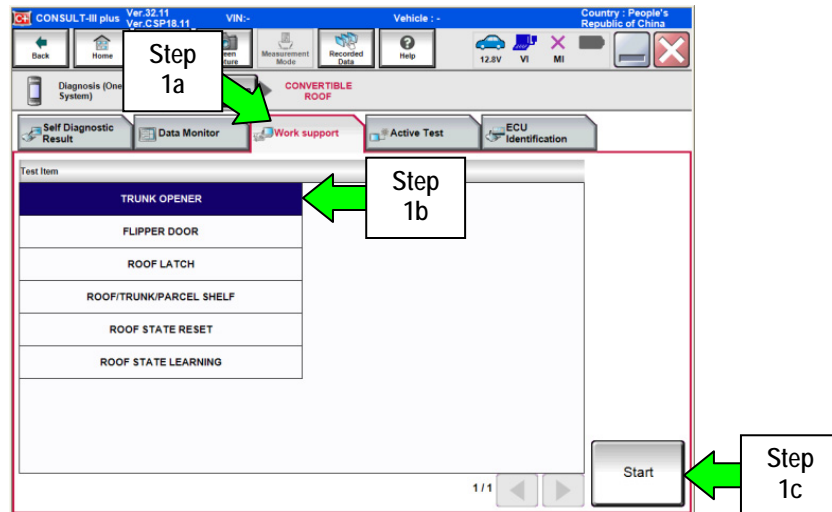


Figure A

2. Select **Start**.

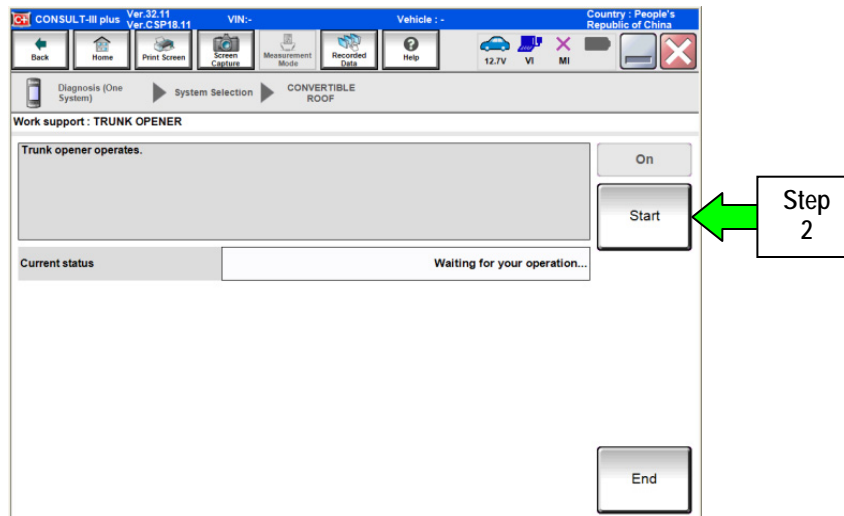


Figure B

3. Select **On** to open the trunk, and then select **End**.

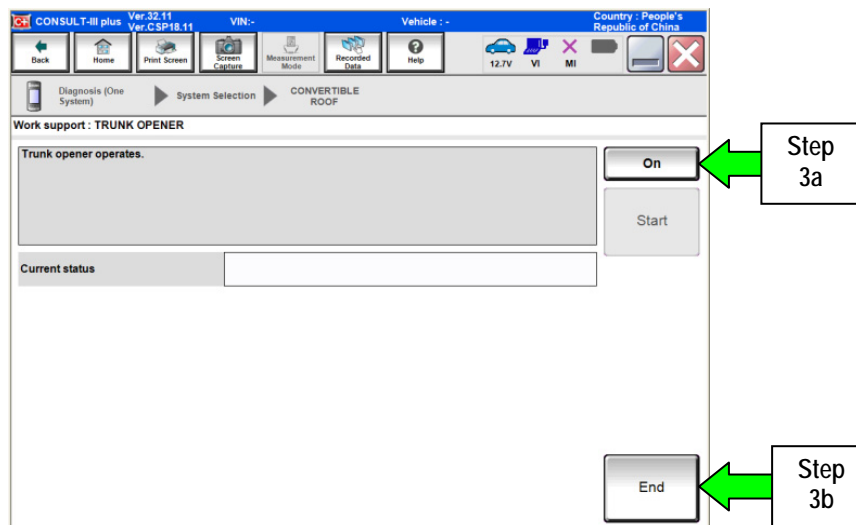


Figure C

Flipper Doors

1. Under the **Work support** tab, select **FLIPPER DOOR**, and then select **Start**.

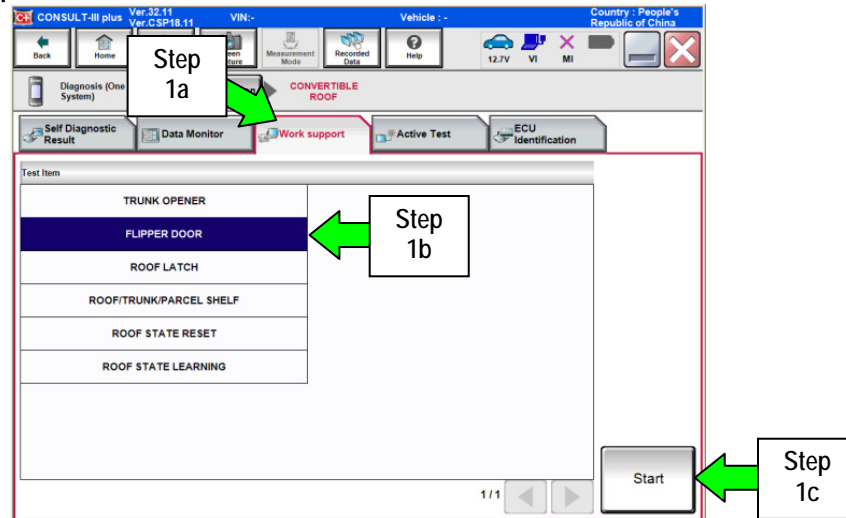


Figure D

2. Select **Start**.

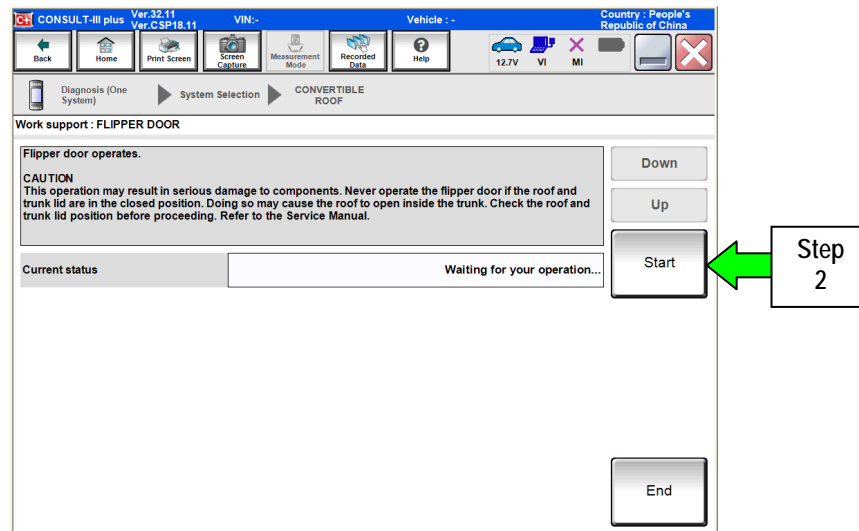


Figure E

3. Select the **Up** and **Down** buttons as needed to tuck the flipper doors under the open trunk.
4. Once completed, select **End**.

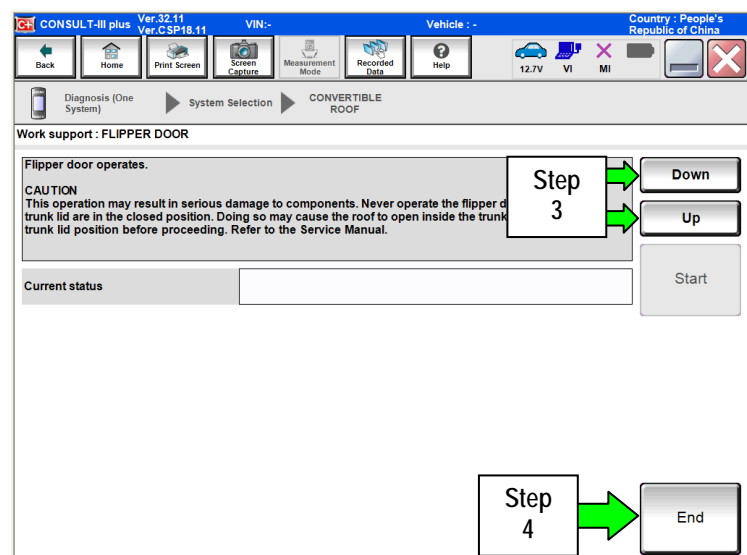


Figure F

Roof Latch

1. Under the **Work support** tab, select **ROOF LATCH**, and then select **Start**.

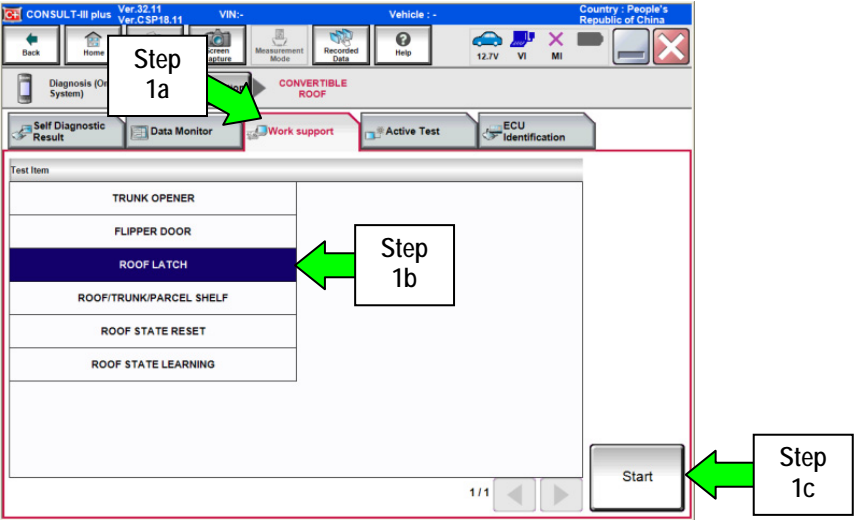


Figure G

2. Select **Start**.

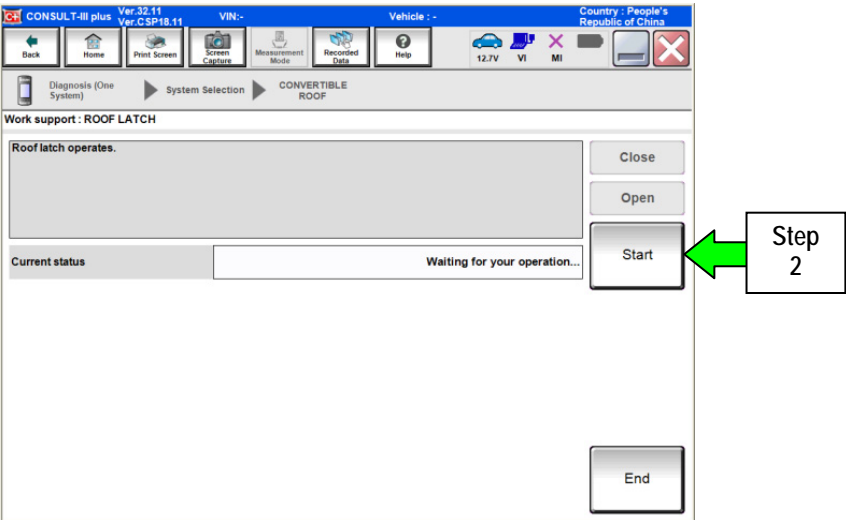


Figure H

3. Select **Open**, and then select **End** when completed.

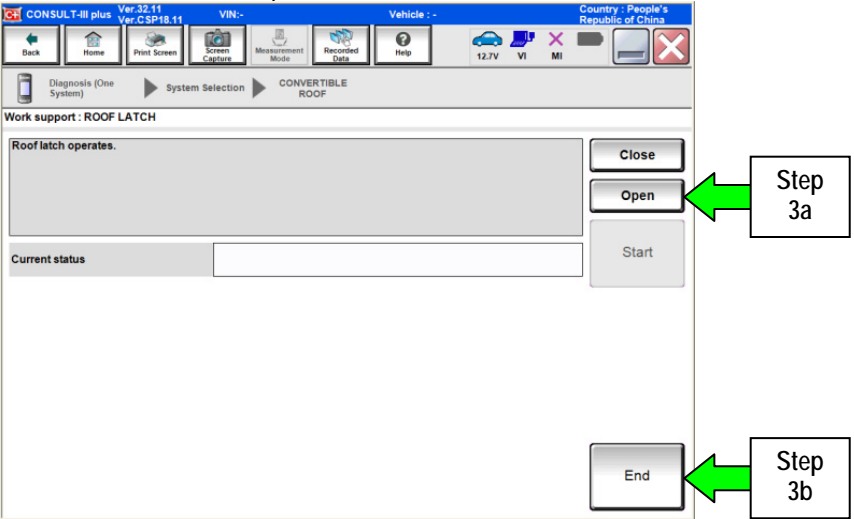


Figure i

Roof/Trunk/Parcel Shelf

- Under the **Work support** tab, select **ROOF/TRUNK/PARCEL SHELF**, and then select **Start**.

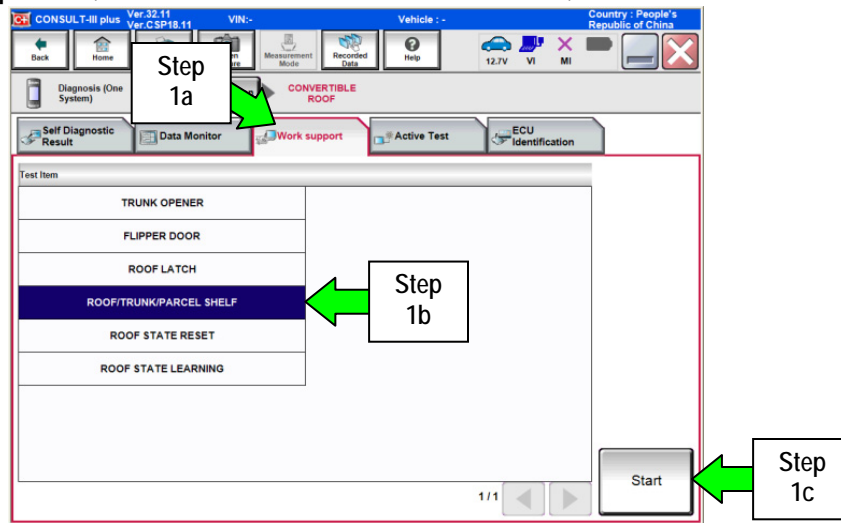


Figure J

- Select **Next**.

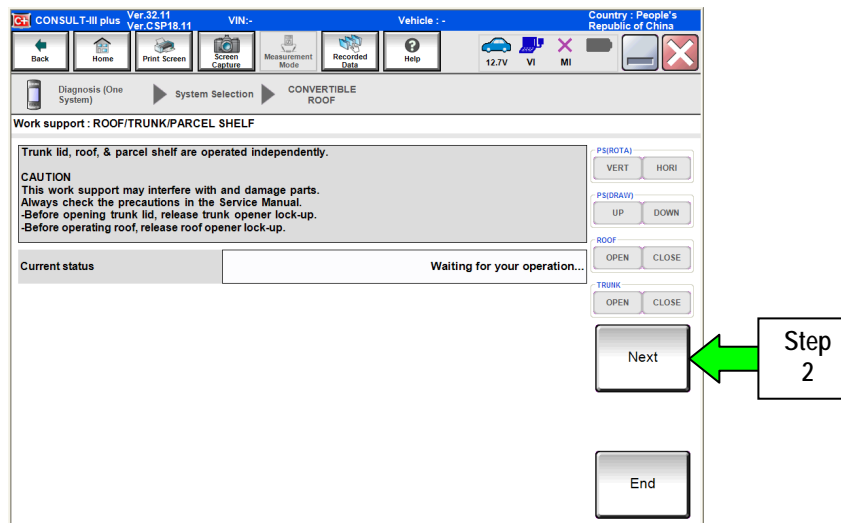


Figure K

- Operate the components in the order given below:

Parcel angle direction : PS(ROTA):VERT/HORI
 Parcel Up/Down : PS(DRAW):UP/DOWN
 Roof Close/Open : ROOF:OPEN/CLOSE
 Trunk Close/Open : TRUNK:OPEN/CLOSE

- When completed, select **End**.

- After closing the trunk, the roof will be fully closed.

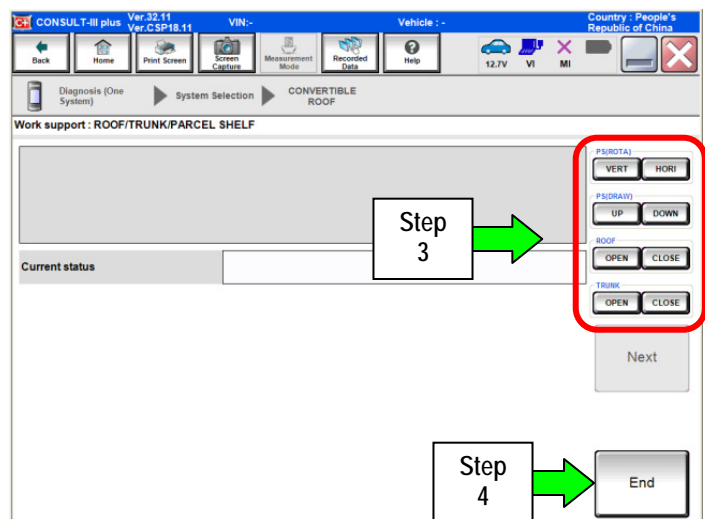


Figure L

9. Once the roof is fully closed, select the **Self Diagnostic Result** tab, check for stored roof related DTCs.
 - If DTCs are found stored in "CRNT" (current), go to step 10 below.
 - If DTCs are found stored in "PAST" or no DTCs found, go to page 11, step 14.

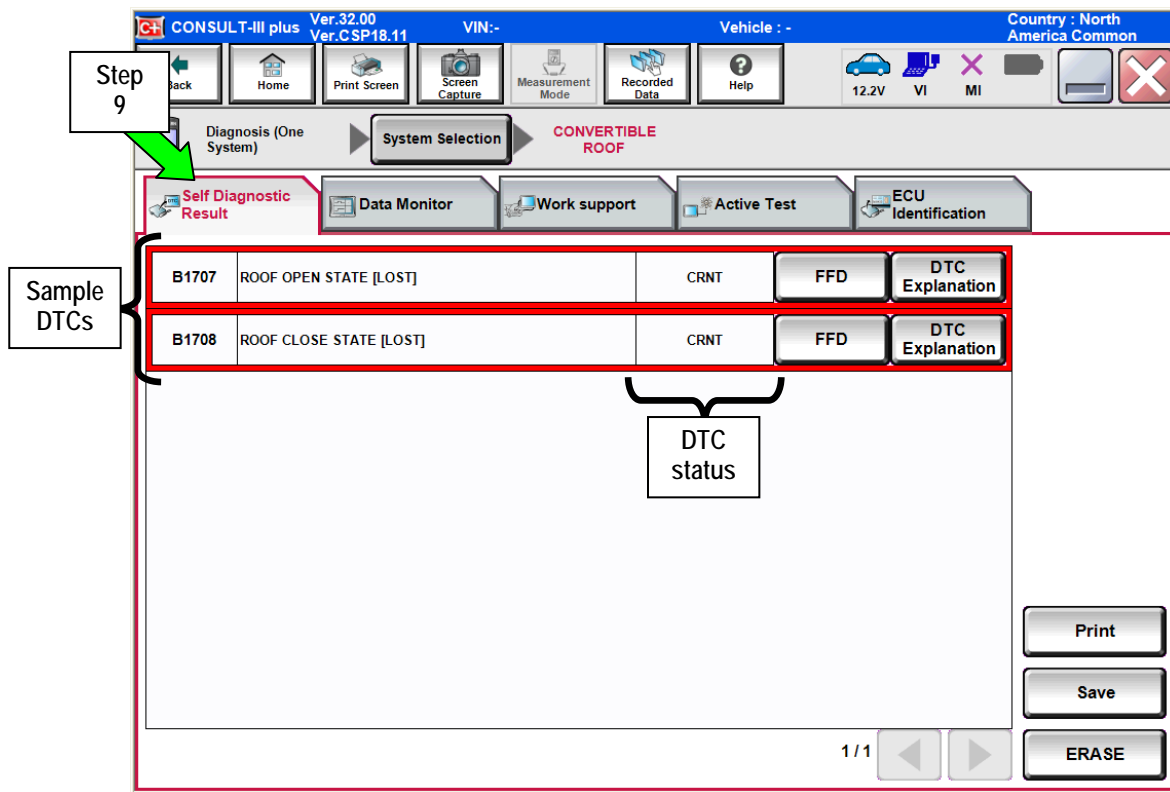


Figure 6

10. Turn the ignition OFF, disconnect the battery charger, and then disconnect both battery cables from the battery, negative cable first.
11. Touch the cable ends together for five (5) minutes.
 - Keep the cable ends touching by taping or clamping them together.

CAUTION: Cover the battery posts with plastic caps or other suitable insulation to keep the battery from shorting.
12. After 5 minutes, separate the battery cables, and then connect them to the battery, positive cable first.
13. Connect the battery charger, set at low charge, and then turn the ignition ON.

14. Go back to C-III plus, select **Work support**, **ROOF STATE RESET**, and then select **Start**.

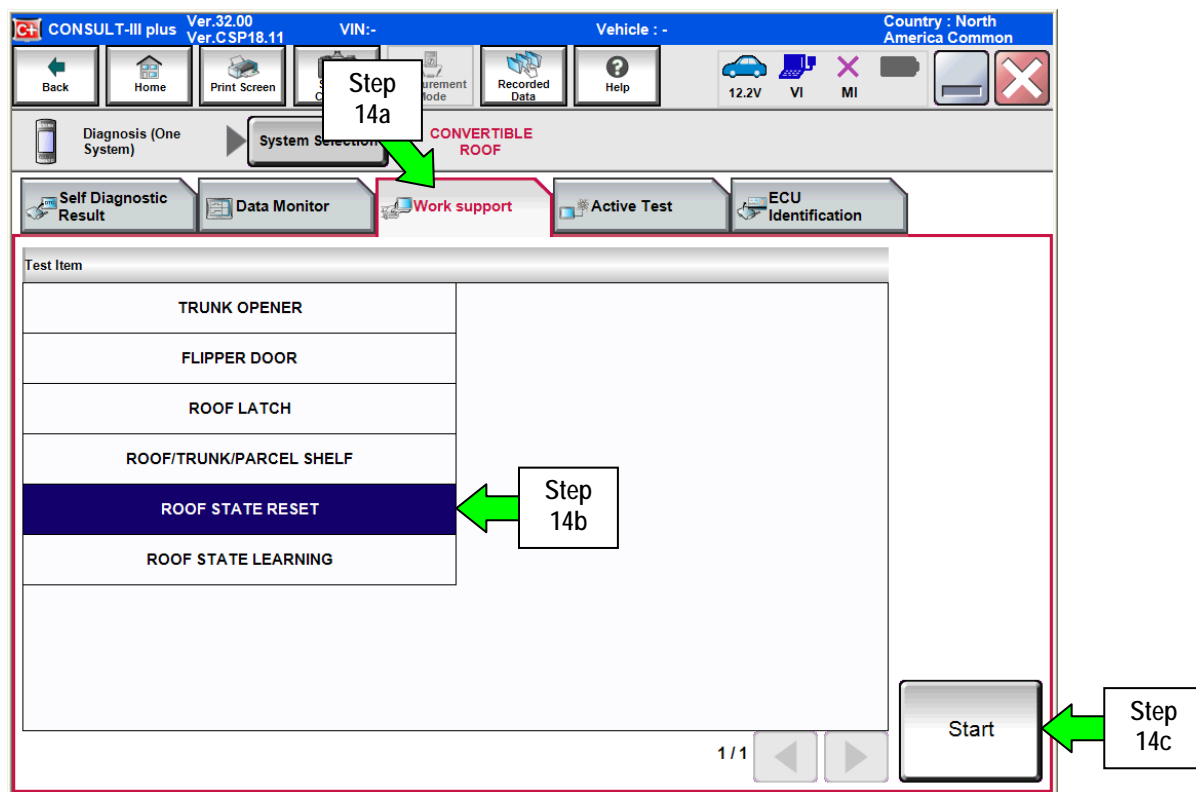


Figure 7

15. Select **Start**.

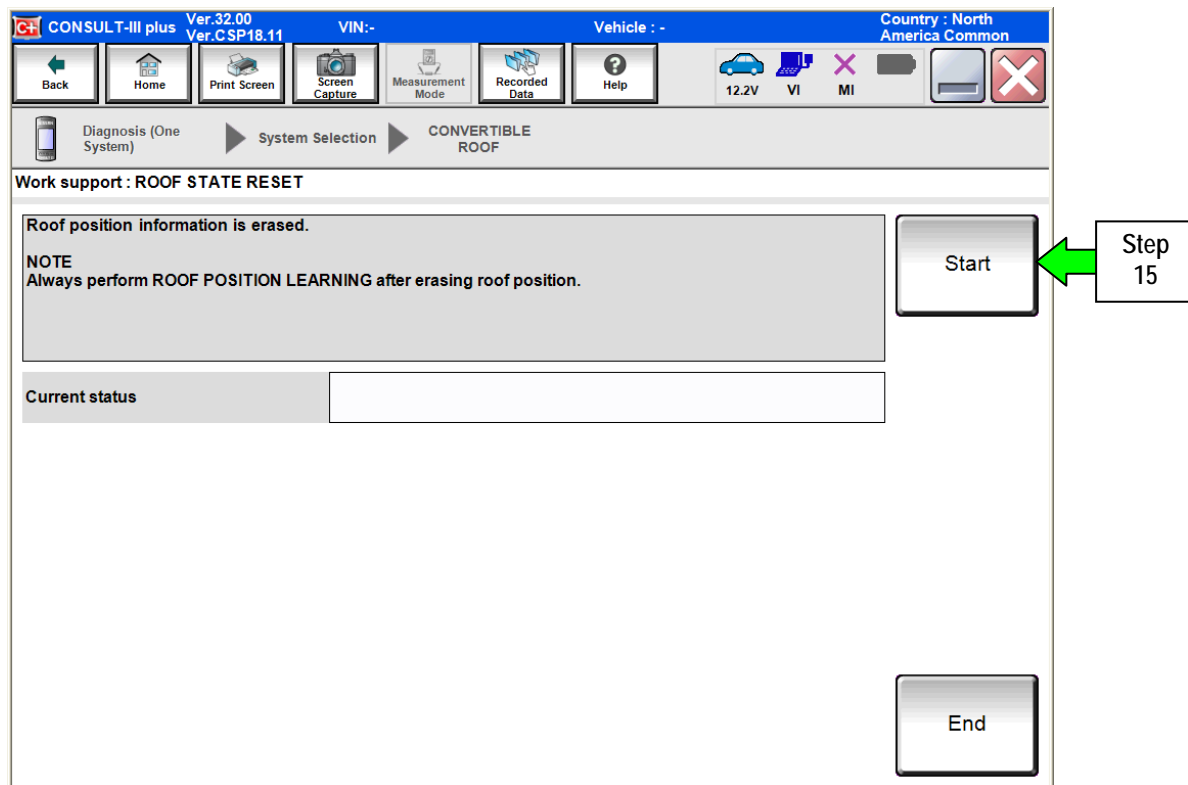


Figure 8

16. Select **End**.

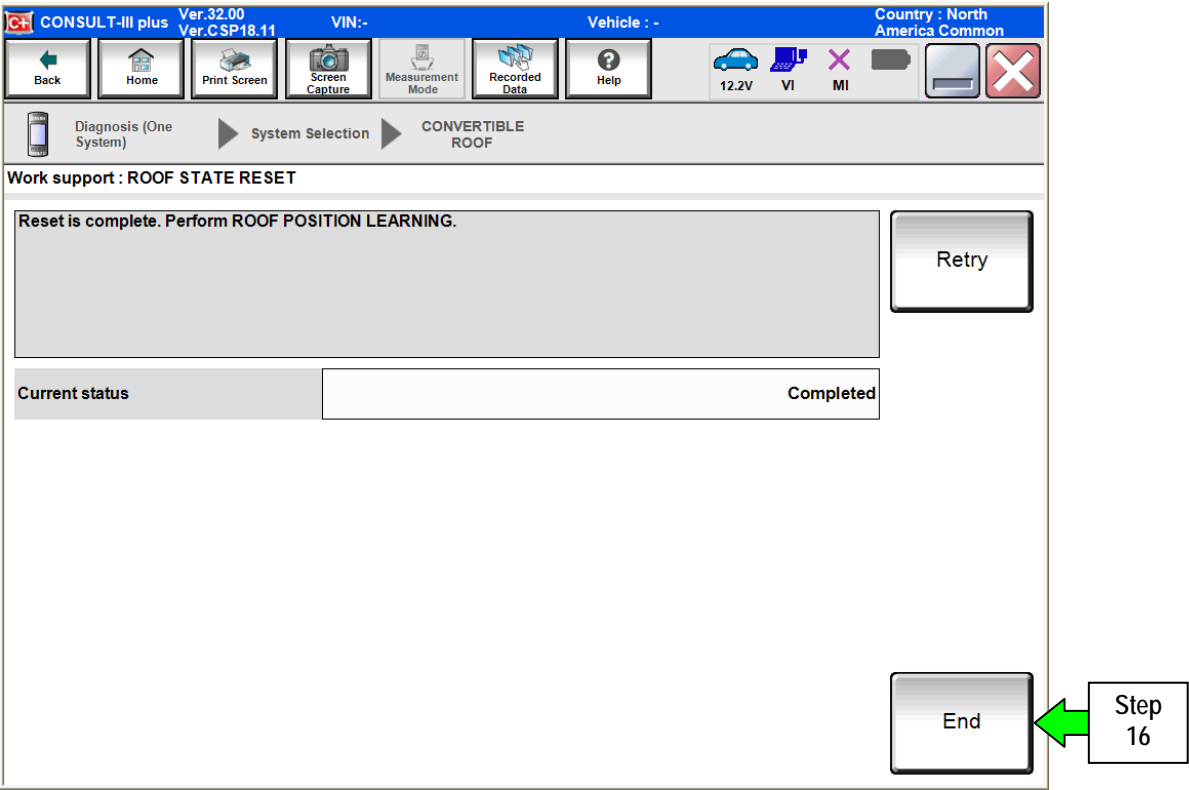


Figure 9

17. Select the **Work support** tab, **ROOF STATE LEARNING**, and then select **Start**.

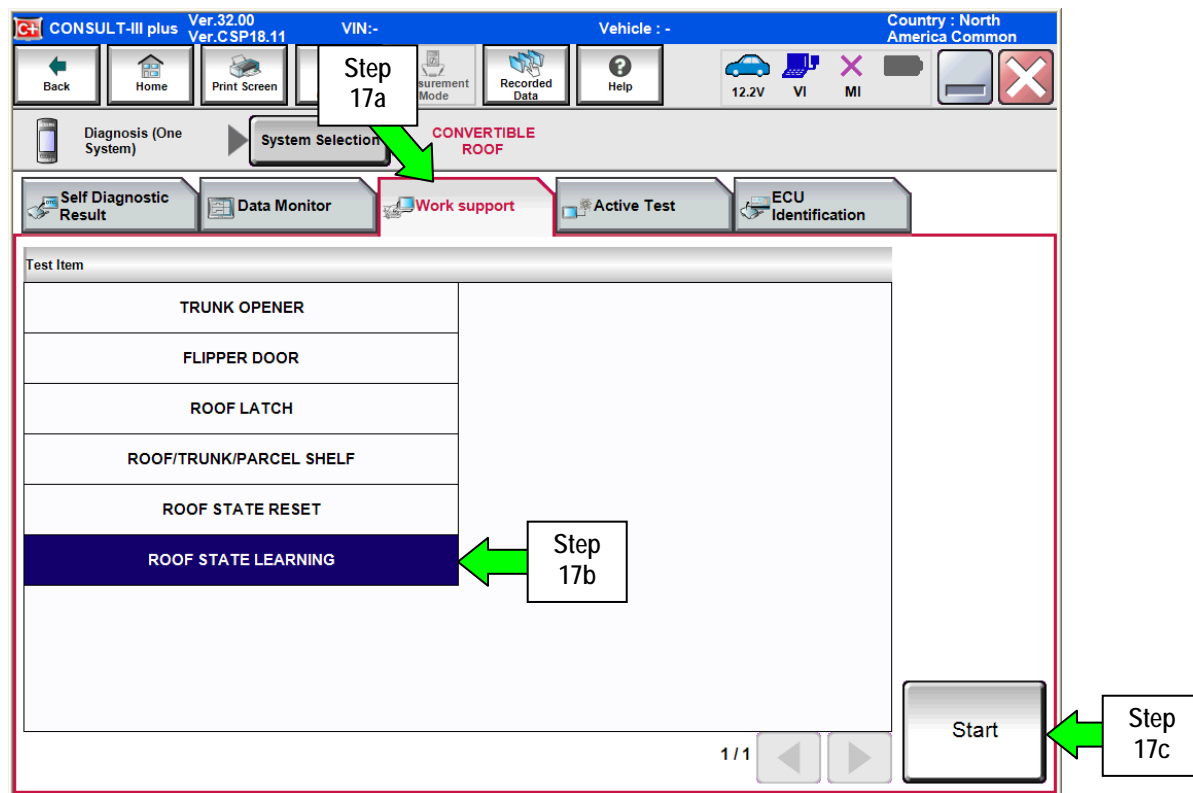


Figure 10

18. Select **Start**.

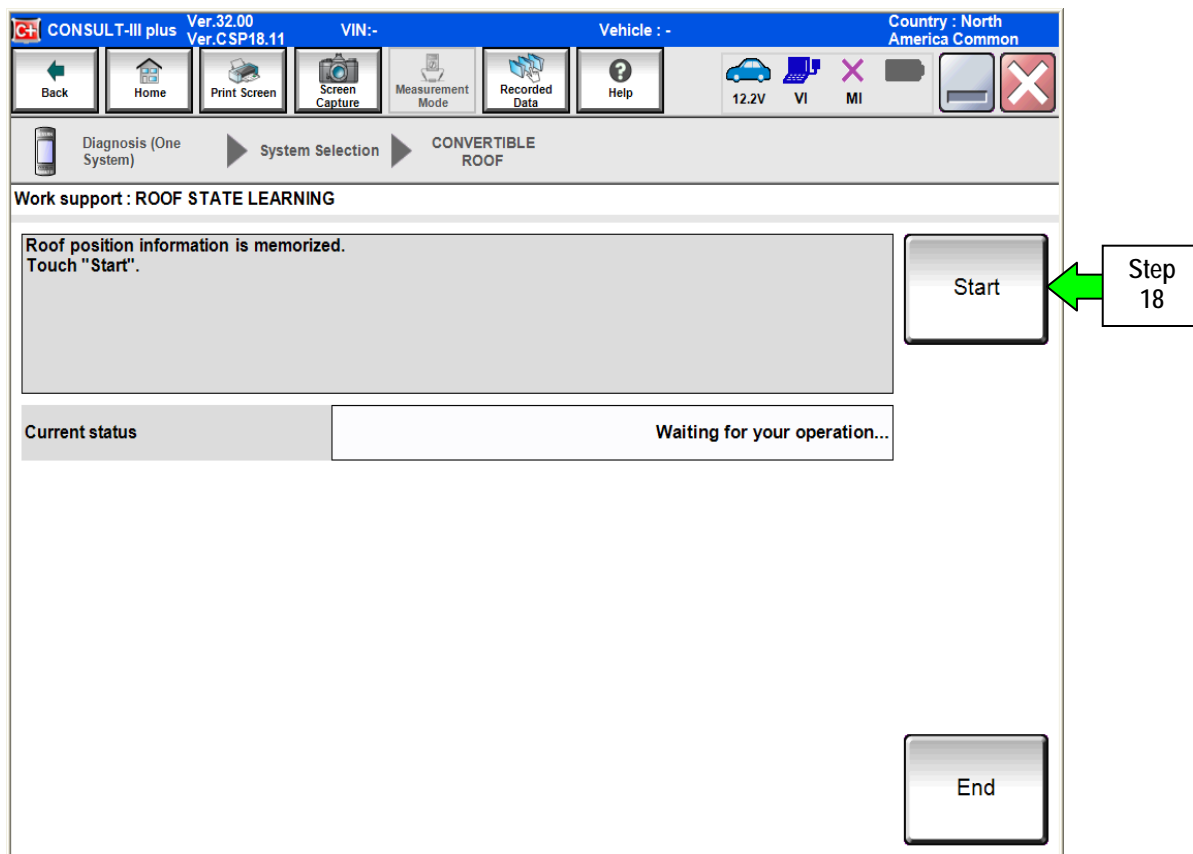


Figure 11

19. When the screen in Figure 12 appears, press and hold down the retractable hard top operating switch (roof switch) in the vehicle to fully open the roof.
- If the roof stops opening after all windows go down completely and the parcel shelf drops down, release and then press and hold down the roof switch again.
20. After the roof has fully opened, press and hold down the roof switch to fully close the roof.

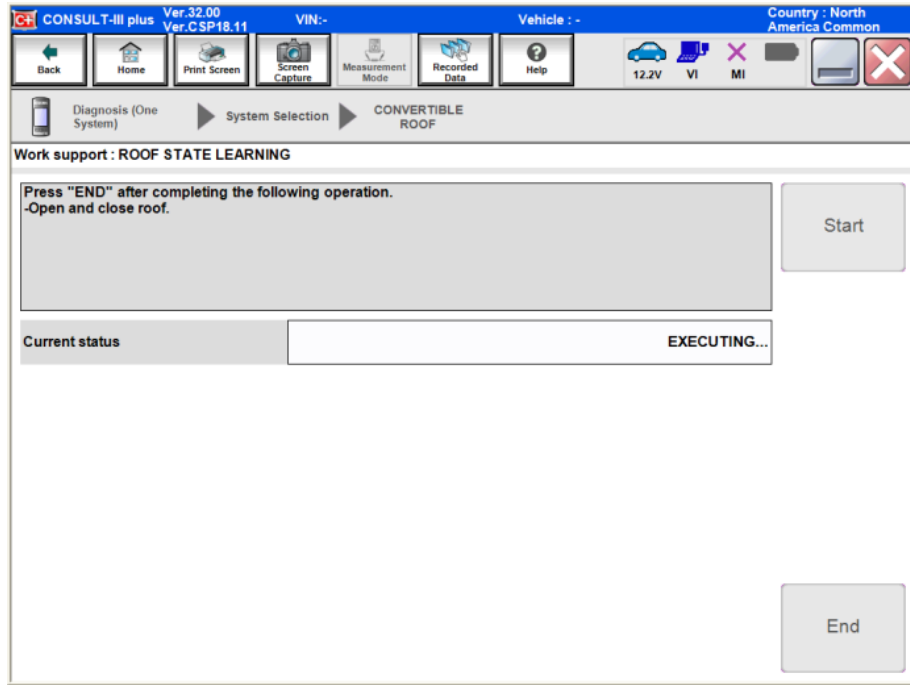


Figure 12

21. When completed, the screen in Figure 13 will appear.
22. Select **End**.

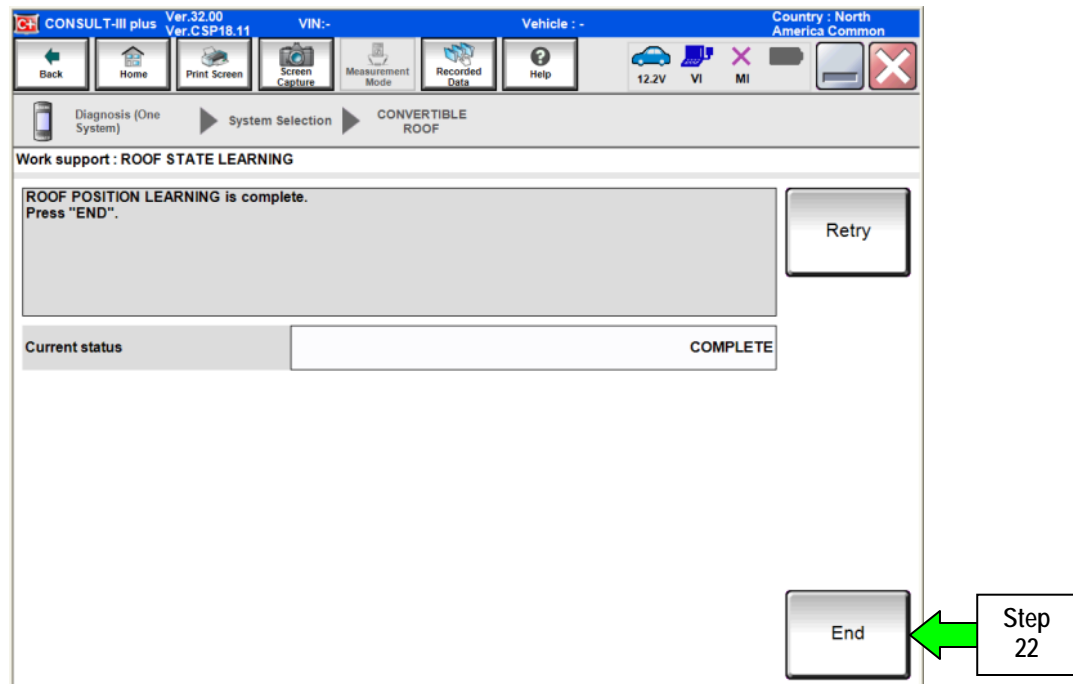


Figure 13

23. Select the **Self Diagnostic Result** tab, and then select **ERASE**.

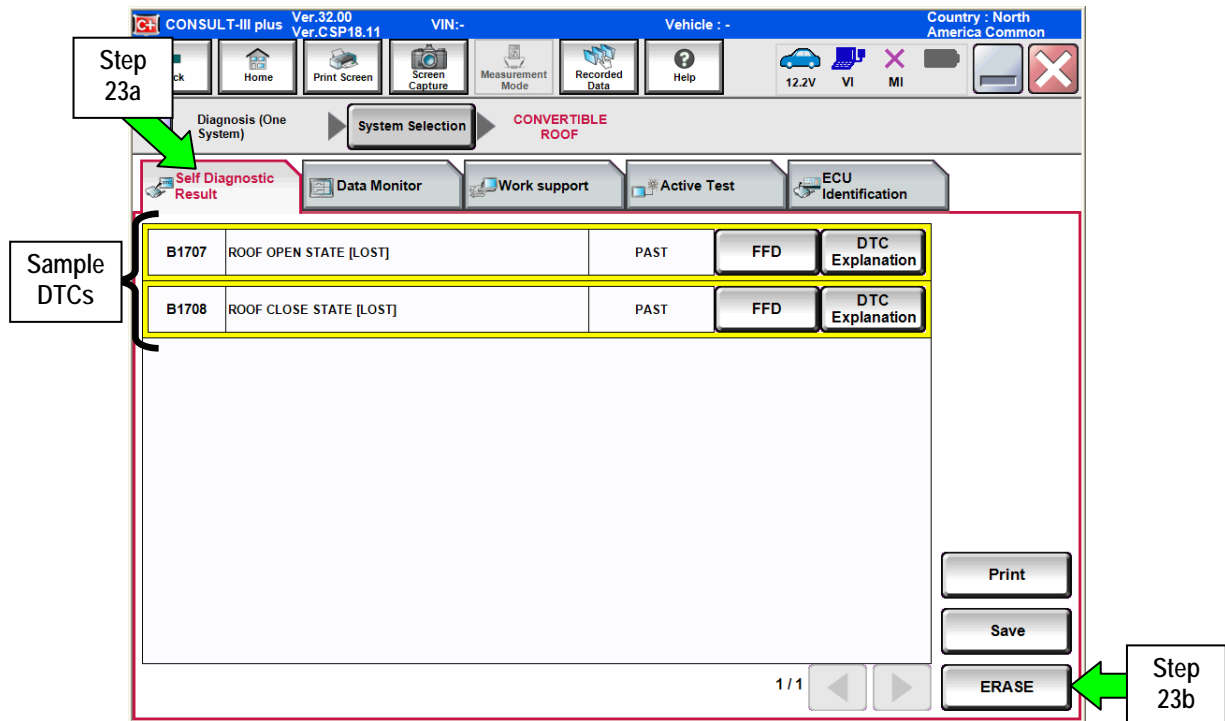


Figure 14

24. Select **Erase**.

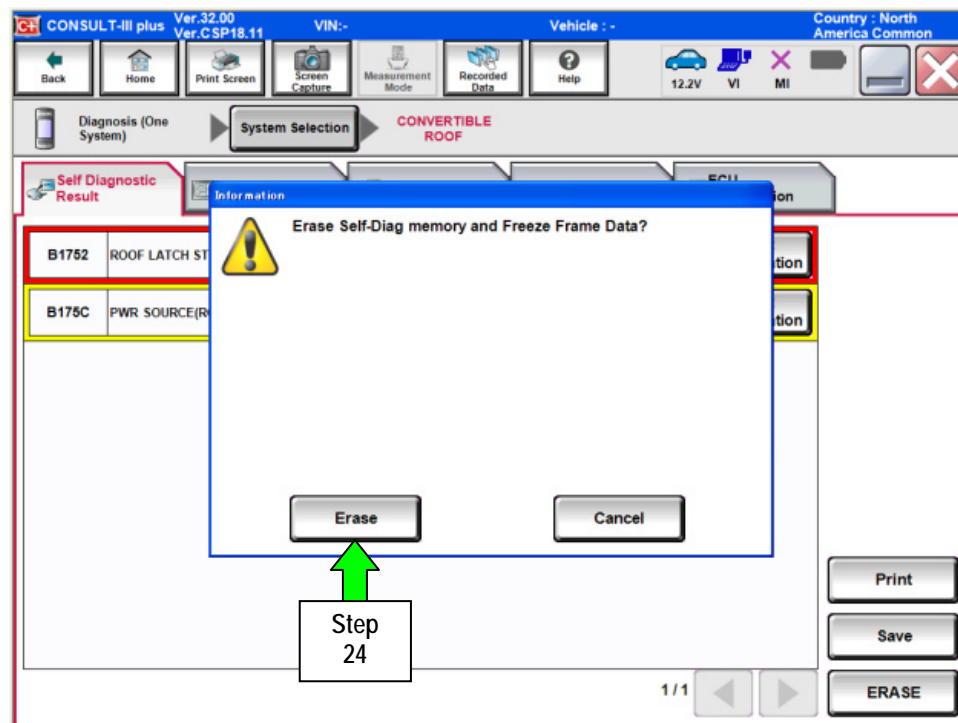


Figure 15

25. Select **Close**.

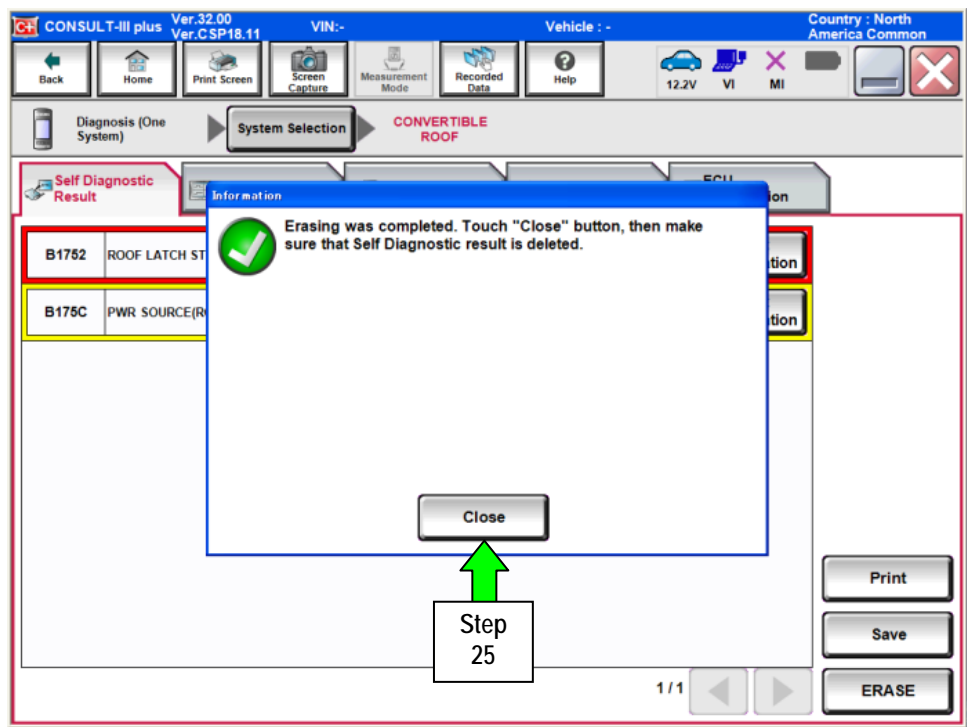


Figure 16

26. DTCs have been successfully erased if the screen below appears.

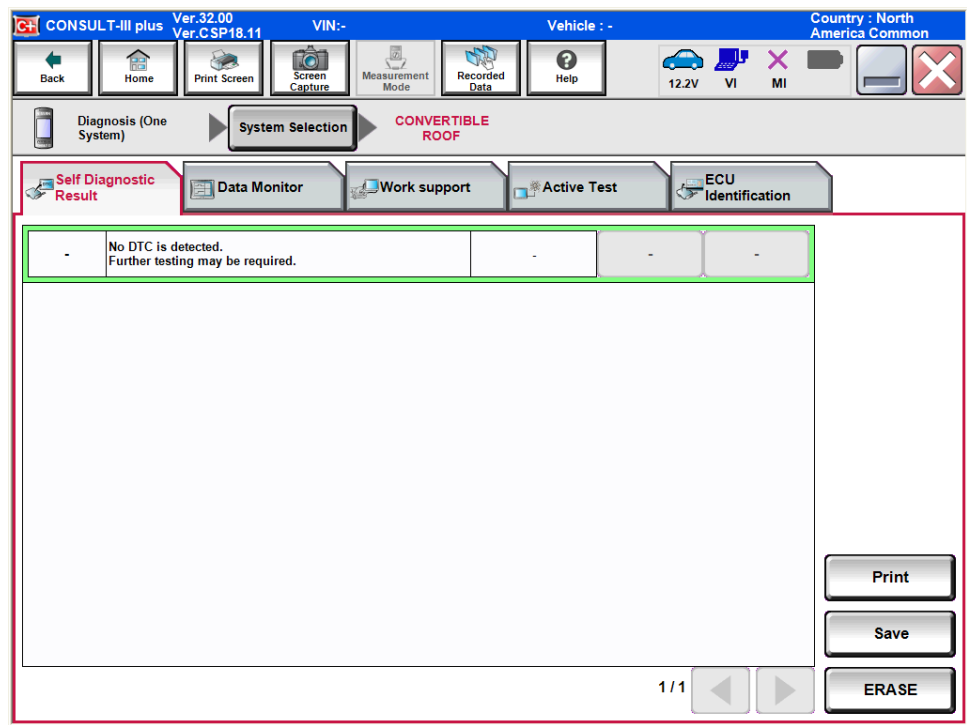


Figure 17

27. Initialization is complete. Verify the roof opens and closes normally.

28. Remove the battery charger.